

**Rubtech**<sup>TM</sup>  
www.rubtech.ae

RESILIENT  
RUBBER  
PRODUCTS

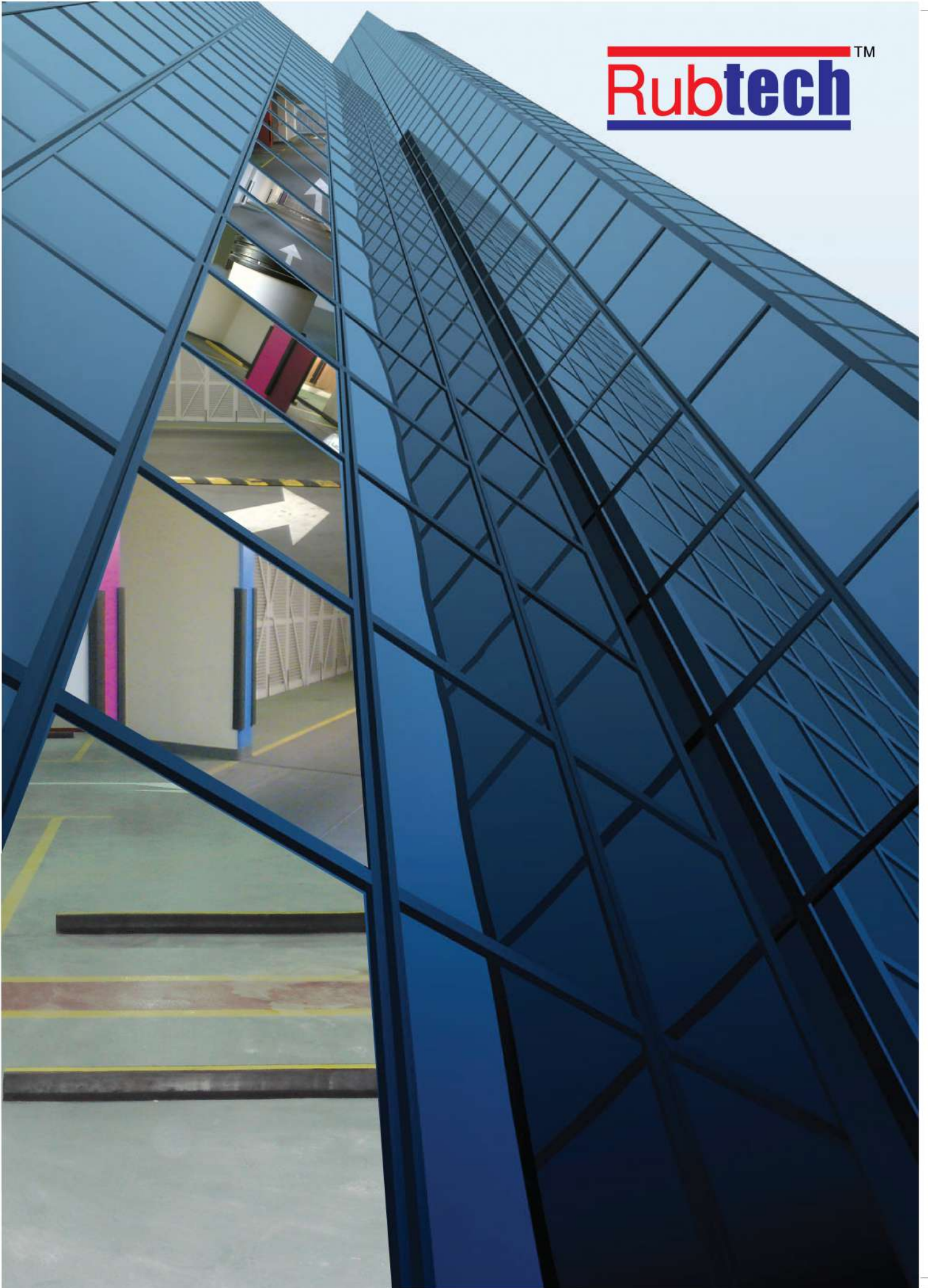


**Hira**

Manufacturers of Moulded &  
Extruded Rubber Products



**Rubtech**<sup>TM</sup>



# INTRODUCTION

Established in 1980 in Dubai, United Arab Emirates, the **Hira Group** started their activities in the air-conditioning industry and is today one of the most trusted name in the Middle East and India for HVAC requirements.

**Hira Industries L.L.C** is the manufacturing division of the group with an established state-of-the-art rubber plant, catering to the markets demands for moulded and extruded rubber products. Rubtech™ brand of rubber products are made as per customer specifications for industrial, marine and construction industries. At Hira Industries, our mission is to be a full-line designer, producer and supplier of all customized rubber requirements. We aim to constantly improve our products and services by continually reducing the variability of our process and never depending upon inspection to achieve quality, but as a tool to measure this variability.

## **Rubtech™ Product Range**

- Rubtech™ Rubber Corner Guards
- Rubtech™ Rubber Wheel Stoppers
- Rubtech™ Rubber Wall Guards
- Rubtech™ Rubber Speed Humps
- Rubtech™ Marine Fenders
- Rubtech™ Neoprene Pads
- Rubtech™ Moulded & Extruded Rubber Products
- Rubtech™ EPDM Rubber Profiles

**Design and Development:** The Rubtech™ Rubber Division of Hira Industries has technically qualified professionals for developing new products or modifying existing ones to offer total customized solutions and meet stringent customer demands. Computer Aided Designs and electronic file sharing capabilities decrease product development time and increase accuracy. Updated technical know-how enables the team to create designs that are easier to manufacture and can be competitively priced.

**Regional and International Presence:** Rubtech™ brand has a very strong presence in UAE, Saudi Arabia, Kuwait, Oman, Qatar, Bahrain and in most of the other Middle East countries. The brand has also been widely accepted in US, UK, and other European countries. This itself is a testimony to the high quality standards the division has adopted and sustained in all these years.

**Customer Focused Approach:** At Hira Rubber division, we believe in total satisfaction that leads to retaining the customer in the long run and consolidating the company's position in the competitive arena. Service oriented approach has always been our priority and we consider it to be our strength and technical superiority as the core competence. In case you need any clarification or guidance, please feel free to call on +971 4 884 8414 or send an e-mail to enquiry@rhira.com. We will be more than happy to assist you in the best possible manner.



## FACILITIES

### **Pre-Production Capabilities and Compound Development:**

Our production unit houses a full fledged modern laboratory with state-of-the-art latest equipment and gadgets that enable our design and engineering team to:

- Create a product from general specifications,
- Formulate a custom compound to fit specific applications,
- Conduct extensive product testing to meet set standards,
- Reproduce rubber compounds conforming to client requirements.

### **Design and Engineering:**

Our designing and engineering team specializes in:

- Developing new products or modifying current designs,
- Product Development, Testing and Prototypes,
- Designing Tool, Die and Mould,
- Computer Aided Designing (CAD)

Thanks to our CAD and electronic file sharing facilities, we can successfully reduce the product development time with increased accuracy. Our understanding of rubber moulding enables us to create designs that are economical and easier to assemble.

### **Compounding and Mixing:**

The Computer-controlled 'Mixing Facility' facilitates us to have total control over the raw material quality and accurate mixing of compounds.

Compounds are methodically tested as per ASTM standards to check the cure state, tensile strength, elongation and every other possible characteristic to match exact specifications.

# FACILITIES





# IMPACT PROTECTION SYSTEMS

## **Applications:**

The typical applications of Rubtech™ range of rubber products are:

- Car Parking
- Loading Bays
- Warehouses
- Industrial Units
- Cold Stores
- Marine Industries

## **Material Components:**

Extruded rubber profiles made from durable rubber, which are resilient, impact resistant and non-marking on contact.

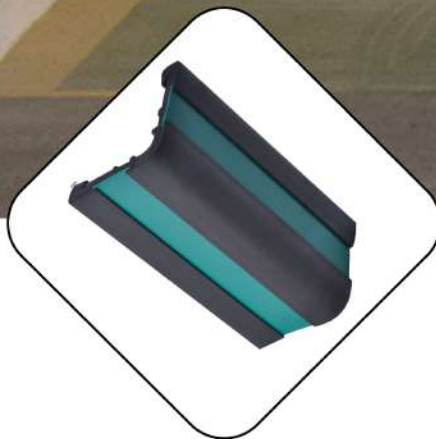
## **Salient Features:**

- Impact resistant
- Reduces damage to building components
- Reduces damage to vehicles
- Aesthetic finish with concealed fixings
- Easy to install, maintenance free
- Internal & external use
- Excellent resistance to weathering & UV

# INDEX

<b>Title</b>	<b>Page No.</b>
Rubtech™ Rubber Corner Guards	6-7
Rubtech™ Rubber Wall Guards	8-9
Rubtech™ Rubber Speed Humps	10-11
Rubtech™ Rubber Wheel Stoppers	12-13
Rubtech™ Neoprene Pads	14-15
Rubtech™ Marine Fenders	16-17
Rubber Dock Bumpers	18
Rubber Selection Data Chart	19
Specifications	20
Salient Features of Rubtech™ IPS	21
Projects	22-40
Site Applications	41
Certification	42-44

# RUBBER CORNER GUARDS



**IDEAL PROTECTION FOR CONCRETE STRUCTURES  
IN BASEMENT AND OTHER PARKING AREAS**

Rubber Products from HIRA INDUSTRIES

-6-

[www.rubtech.ae](http://www.rubtech.ae)

# RUBBER CORNER GUARDS

## FOR IDEAL PROTECTION OF CONCRETE STRUCTURES IN BASEMENT AND OTHER PARKING AREAS

### DESCRIPTION:

The Corner Guards are designed to protect the edges of columns in structures.

### MATERIALS:

They are manufactured using high impact resistant SBR Rubber. They are also available in NEOPRENE and EPDM on request. Standard color is black. Designs are available with yellow and green strip. Rubber Corner Guards are weather resistant, abrasion resistant, crack resistant and do not stain vehicles.

### SIZES:

Rubber Corner Guards are available with or without galvanized iron insert clips in various sizes.

### WING SIZES:

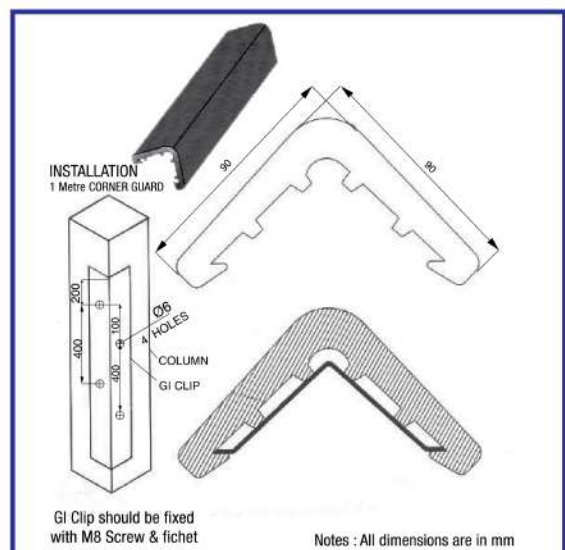
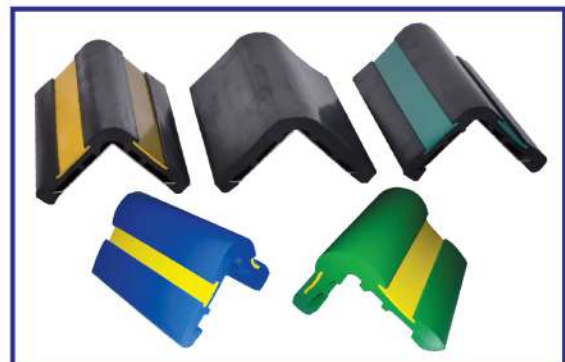
65mm x 65mm
75mm x 75mm
90mm x 90mm
100mm x 100mm
120mm x 120mm

### STANDARD LENGTHS:

The standard lengths of the Corner Guard are 1 meter and 1.2 meters. Other sizes are available on request.

### INSTALLATION:

The Corner Guards are mounted on GI clip inserts and appropriately bolted into columns by screws. Alternatively, they can be fixed to the column surface using appropriate adhesive.



# RUBBER WALL GUARDS



**AN IDEAL WAY TO AVOID STRUCTURAL DAMAGES**

Rubber Products from HIRA INDUSTRIES

-8-

[www.rubtech.ae](http://www.rubtech.ae)

# RUBBER WALL GUARDS

## AN IDEAL WAY TO AVOID STRUCTURAL DAMAGES

### DESCRIPTION:

Wall Guards are designed to protect the structures from impact of trolleys and general warehouse traffic. They can also be used to protect corners.

### MATERIALS:

They are manufactured using high impact resistant natural rubber. They are also available in NEOPRENE and EPDM on request. Standard color is black. Designs are available with yellow and green strip. Wall Guards have excellent weather resistance, impact resistance and are stain proof.

### SIZES:

Thickness	Width
25mm	200mm
25mm	250mm
25mm	300mm
30mm	120mm
30mm	200mm
30mm	300mm
40mm	200mm
50mm	200mm

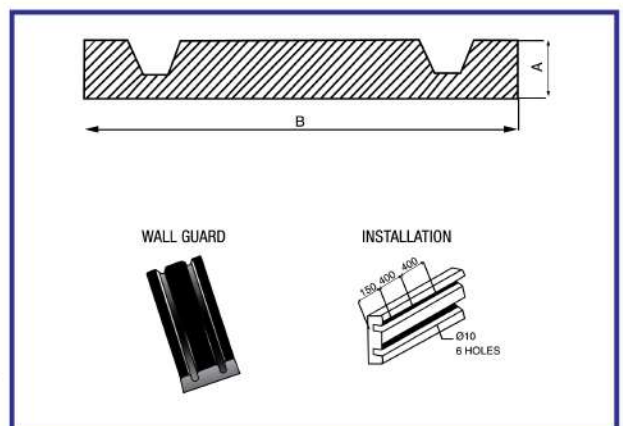


### STANDARD LENGTH:

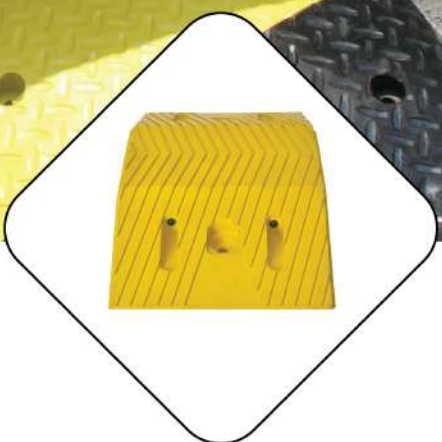
The standard length of the Wall Guard is 4 meters.

### INSTALLATION:

The Wall Guard can be fixed horizontally to a wall or placed in short vertical strip on flat or curved surfaces using fix bolt.



# RUBBER SPEED HUMPS



**RELIABLE SPEED HUMPS FOR GREATER SAFETY**

Rubber Products from HIRA INDUSTRIES

-10-

[www.rubtech.ae](http://www.rubtech.ae)

# RUBBER SPEED HUMPS

## SPEED BREAKERS FOR GREATER SAFETY

### DESCRIPTION:

The Speed Humps are designed to reduce the speed of the vehicle.

### MATERIALS:

The Speed Humps are made of high impact resistance moulded rubber. They have excellent weather resistance and abrasion resistance quality.

### SIZES:

Speed Humps are available in the following sizes:

300mm x 60mm
350mm x 50mm
400mm x 50mm
400mm x 65mm
400mm x 68mm
460mm x 75mm

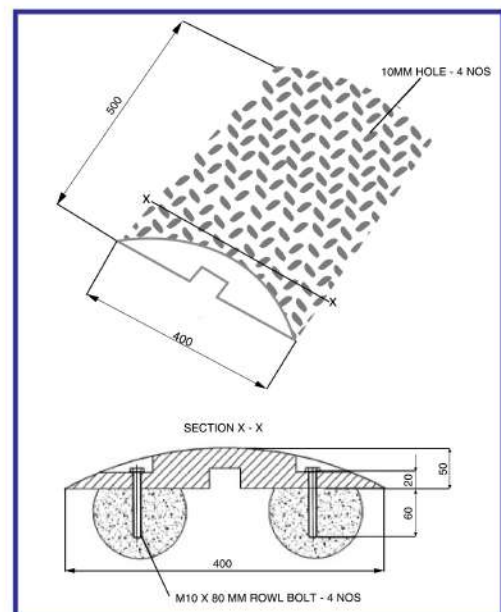
### STANDARD LENGTHS:

The standard lengths of the Speed Humps are 500mm and 250mm.

### INSTALLATION:

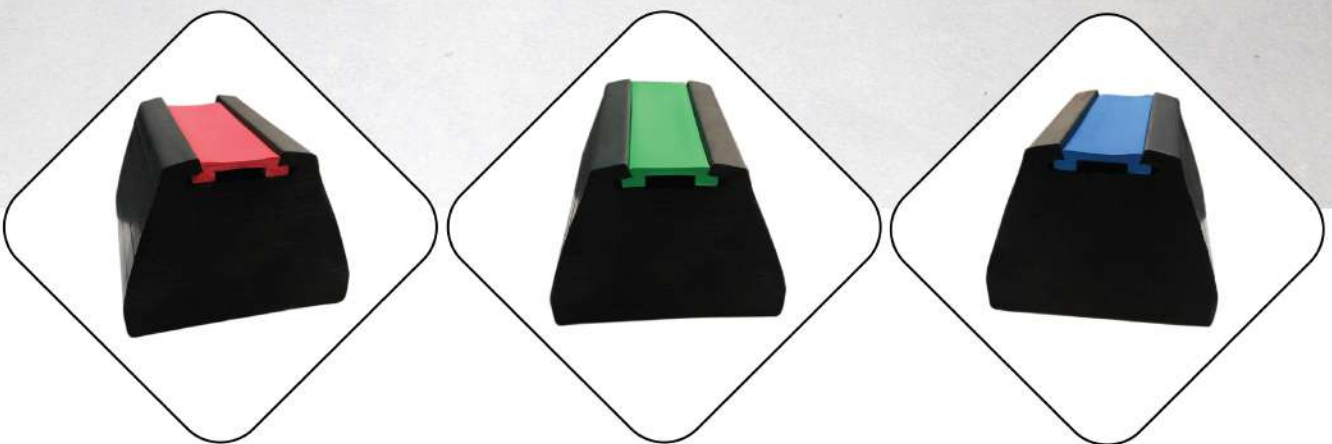
Speed Humps can be fixed using fix bolts in alternate black and yellow humps with end caps.

Available in black & yellow color.





# RUBBER STOP GUARDS



**THE PERFECT WAY TO STOP AND AVOID DAMAGES**

Rubber Products from HIRA INDUSTRIES

-12-

[www.rubtech.ae](http://www.rubtech.ae)

# RUBBER STOP GUARDS

## THE PERFECT WAY TO STOP AND AVOID DAMAGES

### DESCRIPTION:

Wheel Stoppers are designed to provide good energy absorption from vehicle impact; thus, protecting the anchor bolts from the impact. The anchor bolts are protected from direct stress, unlike in concrete stoppers where all the force is transferred to the anchor bolts.

### MATERIALS:

Wheel Stoppers are made of high impact resistance extruded rubber and have excellent weather resistance, crack resistance and abrasion resistance quality. They are available in Neoprene and EPDM on request.

### SIZES:

Wheel Stoppers are available in the following sizes:

Base Width	Height
130mm	100mm
137.5mm	100mm
150mm	100mm
150mm	150mm
200mm	100mm

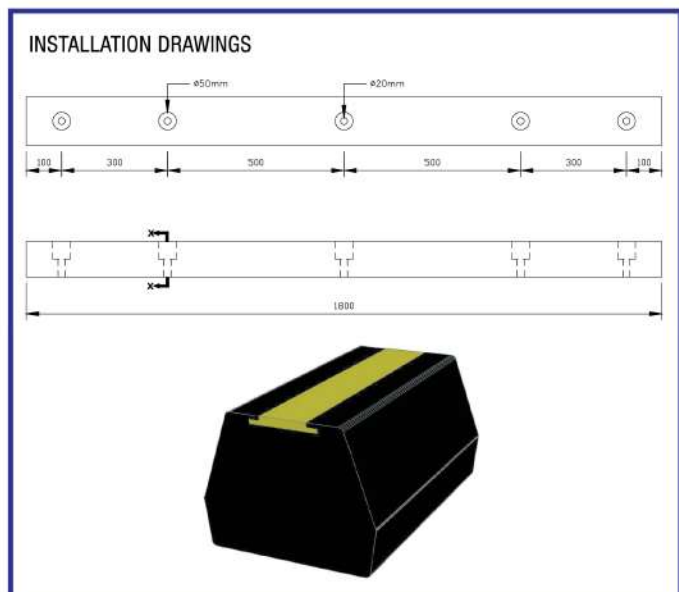


### STANDARD LENGTH:

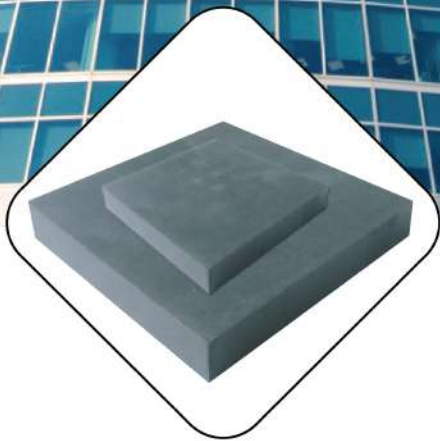
The standard length of the Wheel Stopper is 1800mm.

### INSTALLATION:

Wheel Stoppers can be fixed using wench anchors by putting counter sunk in the stoppers.



# NEOPRENE PADS



**ELASTIC SHOCK AND VIBRATION ABSORBING  
MATERIALS**

Rubber Products from HIRA INDUSTRIES

-14-

[www.rubtech.ae](http://www.rubtech.ae)

# NEOPRENE PADS

## ELASTIC SHOCK AND VIBRATION ABSORBING MATERIALS

### DESCRIPTION:

Neoprene Pads are moulded or cut from moulded sheets of high-grade, new rubber compound.

### USE:

They are used as economical efficient pads for pre-cast, pre-stressed concrete or steel beams in buildings. Neoprene Pads permit a smooth and uniform transfer of load from the beam to the substructure, allowing beam rotation at the bearing due to deflection of the beam under load. Neoprene Pads have no movable parts. Hence, thermal expansion and contraction are absorbed by the pads ability to give and take in shear. There is no sliding between the pad and beam or between the pad and abutment.

### SPECIFICATION:

TEST NAME	TEST METHOD
Hardness	ASTM D2240
Tensile Strength	ASTM D412
Tear Strength	ASTM D624
Compression Set	ASTM D395
Elongation At Break	ASTM D412
Ozone Resistance	ASTM D5963
Brittleness at - 40°C	ASTM D2137

### APPLICATION:

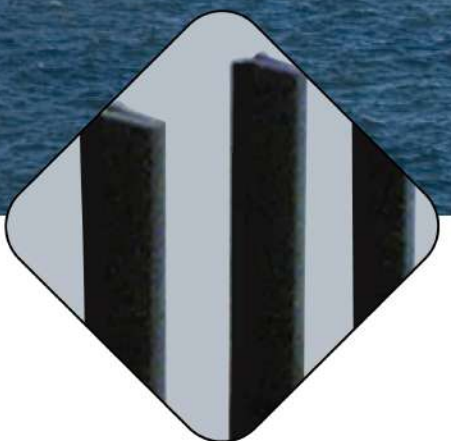
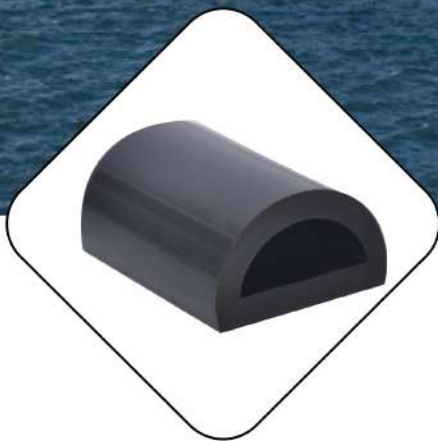
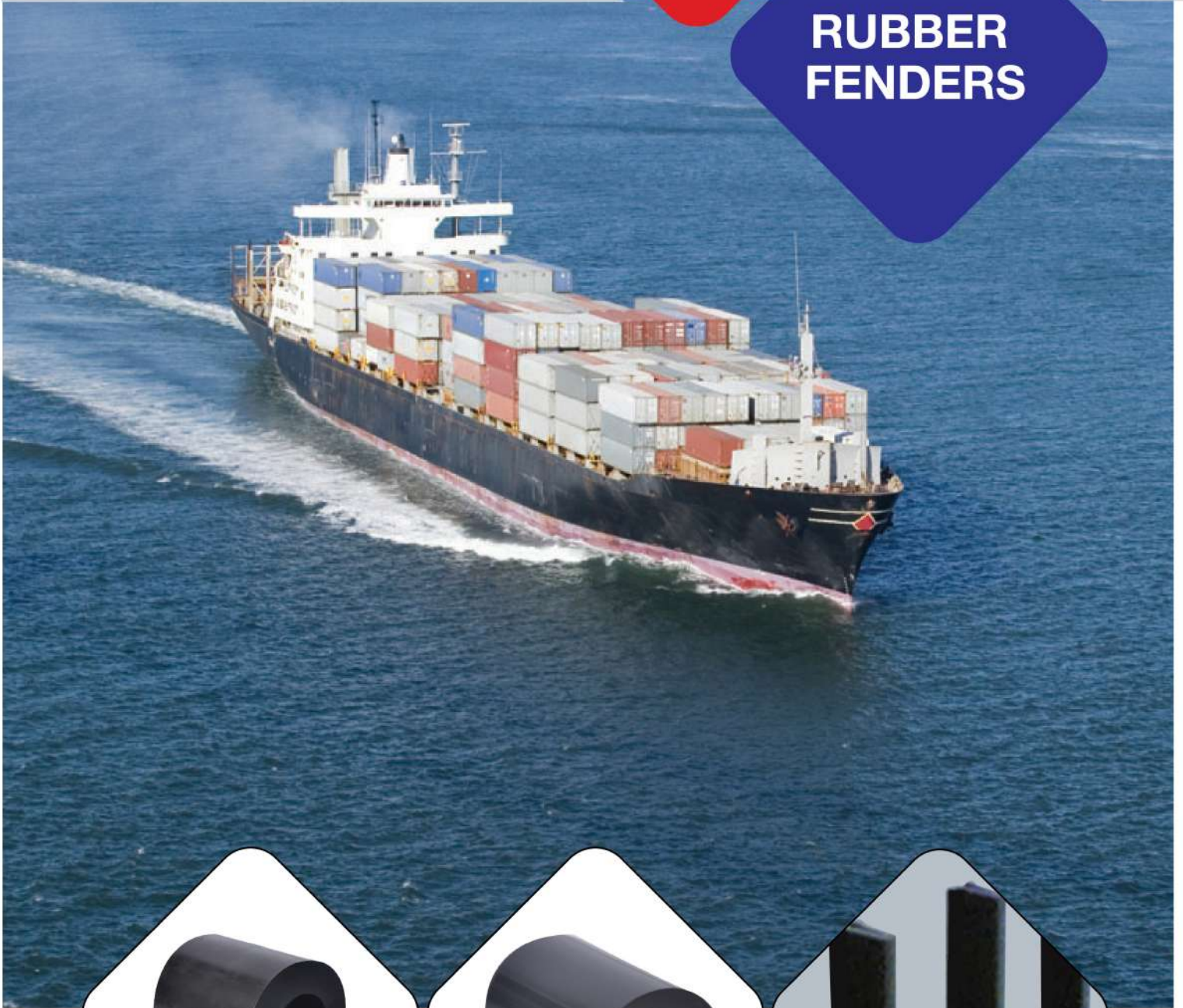
Neoprene Pads can be used in any environment where a structure needs to be isolated from a source of vibration. This includes offices, hospitals, apartments, oil rig modules, auditorium, TV, radio and other studios.

### BENEFITS:

Superior dynamic performance, maintenance-free work life, vibration absorption, prevention of sound transfer and they are available in a range of sizes.

*Note: These test values are obtained at normal laboratory condition.  
Results may vary from one lab to another lab by 5% to 10%.*

# RUBBER FENDERS



**WHERE RELIABILITY IS ON PRIORITY**

Rubber Products from HIRA INDUSTRIES

-16-

[www.rubtech.ae](http://www.rubtech.ae)



# RUBBER FENDERS

## WHERE RELIABILITY IS ON PRIORITY

### DESCRIPTION:

Fenders are designed to prevent boats/ships and the dock from being damaged during the mooring process or during berthing process.

### MATERIALS:

The Fenders are made of high impact resistant extruded rubbers either in EPDM or natural rubber. The standard color is black. However, the Fenders are also available in various colors on request. EPDM Fenders have excellent weather resistance, ozone resistance, crack resistance and high abrasion resistance.

### TYPES:

The Fenders are available in the following types.

- 1) D-Fenders
- 2) Cylindrical Fenders
- 3) Arch Fenders
- 4) Element Fenders
- 5) Cone Fenders
- 6) Square Fenders

Customized Fenders can be manufactured as per client requirement.

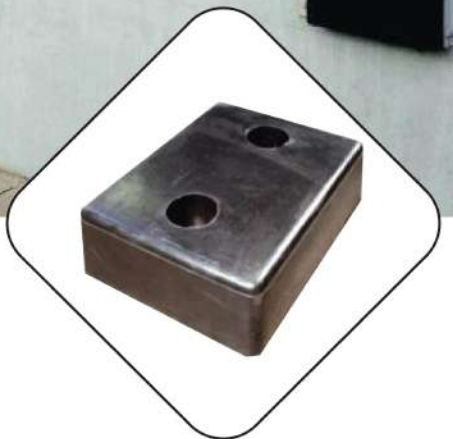
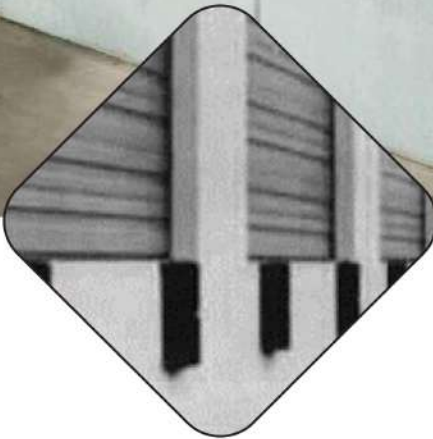
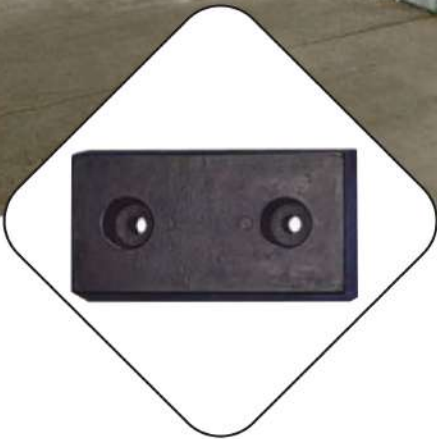
### STANDARD LENGTH:

The standard length of the Fender is 5 meters.

### INSTALLATION:

The Fenders can be fixed horizontally to a wall or mounted in short vertical strips on flat or curved surfaces.

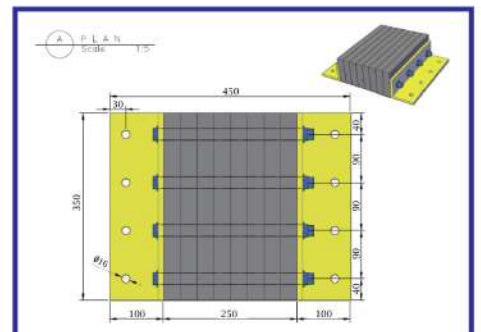
# RUBBER DOCK BUMPERS



Prevent damage to your loading dock with dock bumpers from ramp. Loading dock bumpers are molded in one piece from 100% rubber and they are a cost effective way to maintain structural integrity of your warehouse and loading docks.

## SIZES:

- 85 x 95 x 450mm
- 115 x 250 x 250mm
- 100 x 250 x 320mm
- 150 x 80 x 700mm



## WHERE RELIABILITY IS ON PRIORITY

Rubber Products from HIRA INDUSTRIES

# RUBBER SELECTION DATA CHART

	NATURAL RUBBER	SBR	EPDM	NEOPRENE CR
<b>COST FACTOR</b>	1	1	1	2
<b>HARDNESS RANGE</b>	30-95°	40-95°	30-85°	30-90°
<b>COLORS</b>	Black	Black	Full Range	Limited Range
<b>HEAT RESISTANCE (°C)</b> Maximum Continuous Maximum Intermittent	75 °C 105 °C	85 °C 115 °C	130 °C 150 °C	95 °C 125 °C
<b>LOW TEMPERATURE RESISTANCE</b>	-60 °C	-55 °C	-50 °C	-40 °C
<b>RESISTANCES</b> Oxidation Ozone & Weathering	Poor Poor	Poor Poor	Excellent Outstanding	Good Good
<b>OIL RESISTANCE</b> *ASTM Oil No. 1 at 20 °C at 100 °C *ASTM Oil No. 3 at 20 °C at 100 °C	Poor Unsatisfactory Unsatisfactory Unsatisfactory	Poor Unsatisfactory Unsatisfactory Unsatisfactory	Fair Unsatisfactory Unsatisfactory Unsatisfactory	Excellent Good Good Fair
<b>FUEL RESISTANCE</b> *ASTM FUEL B at 40 °C	Unsatisfactory	Unsatisfactory	Unsatisfactory	Poor
<b>CHEMICAL RESISTANCE</b> Acids Bases	Poor-Fair Poor-Fair	Fair Good	Good Good	Good Fair
<b>PHYSICAL STRENGTH</b>	Fair-Good	Good	Good	Good
<b>COMPRESSION SET</b>	Poor	Good	Good	Fair to Good
<b>TEAR &amp; ABRASION RESISTANCE</b>	Fair	Good	Good	Good
<b>RESILIENCE</b>	Fair	Good	Very Good	Very Good
<b>PERMEABILITY TO GAS</b>	Poor	Fairly Low	Fairly Low	Low
<b>FLAME RESISTANCE</b>	Poor	Poor	Poor	Self-extinguishing
<b>WATER RESISTANCE</b>	Fair	Good	Excellent	Good

## SPECIFICATION

Hira Industries presents a range of rubber protection systems that are made of high impact resistance rubber manufactured in a number of different sizes and color configurations. Rubtech™ product range comprises of elements which can control the speed of vehicles; thus, protecting people, structural surfaces and other vehicles in the car park.

Rubtech™ product range also incorporates other elements which are purely for impact resistance, in order to avoid or minimize the potential damage to a structural component such as a column, a wall or a loading dock area when impacted.

The system has an aesthetic finish with concealed fixings, ease of installation, maintenance free and has an excellent resistance to UV and weathering. SBR Rubber properties are used in the manufacture of impact protection systems.

Sr. No.	Test Description	Unit	ASTM Method	Lab Observation
1.	Material	-	-	SBR
2.	Specific Gravity	-	-	1.450
3.	Hardness	°SA	D2240	75±5
4.	Tensile Strength	N/mm <sup>2</sup>	D412	12.0
5.	Elongation at Break	% Min	D412	325
6.	Tear Resistance- Die C	KN/m min	D624	30
7.	Compression Set at 22hrs at 70 °C (158 °F)	% Max	D395	26
8.	Ageing Resistance 70hrs at 100 °C (212 °F)	°F	D573	Below are the results for the Ageing Resistance after the duration of time and temperature.
8.1	Change in Hardness	Points	D573	+4
8.2	Change in Tensile Strength	%	D573	-25
8.3	Change in Elongation at Break	%	D573	-22
9.	Water Resistance			Good
10.	Weather Resistance			Good

Note: Above specifications are for all products except Neoprene Pads and Rubtech Rubber Fenders

# SALIENT FEATURES OF RUBTECH™ IPS

## HIGH IMPACT RESISTANCE

RUBTECH™ IPS consists of vulcanized solid rubber products having high impact resistance which leads to superior durability and stable performance.

## FIRE RESISTANCE

RUBTECH™ IPS are designed for superior surface burning characteristics which offers excellent fire resistance and it is rated Class 0 as per ASTM E84.

## UV AND WEATHER RESISTANCE

RUBTECH™ IPS have high resistance over UV radiation and weather enables the products to withstand under extreme climatic conditions and sunlight.

## ABRASION RESISTANCE

RUBTECH™ IPS offers excellent abrasion resistance resulting in excellent performance of the products under high abrasive circumstances due to vehicle movement.

## ECO FRIENDLY

RUBTECH™ IPS have low ODP (Ozone Depletion Potential) and GWP (Global Warming Potential). This makes the products environment friendly.

## EASY INSTALLATION

RUBTECH™ IPS are easy to install due to their dimensional stability and simple installation procedure.





**AN IDEAL  
CHOICE FOR  
PRESTIGIOUS  
PROJECTS**

Rubber Products from HIRA INDUSTRIES

[www.rubtech.ae](http://www.rubtech.ae)

# PROJECTS



Sidra Tower  
Dubai-UAE



Jumeirah Beach Residence  
Dubai-UAE



Business Bay Executive Towers  
Dubai-UAE



Burj Khalifa  
Dubai-UAE



Emirates Headquarters Building  
Dubai-UAE

# PROJECTS



Ubra Towers  
Dubai-UAE



Mazaya Business Avenue  
Dubai-UAE



Park Towers  
DIFC, Dubai-UAE



Sky Courts  
Dubai-UAE



Dubai Hills Mall  
Dubai-UAE

# PROJECTS



Dubai Marina Mall & Hotel  
Dubai-UAE



Empire Heights  
Dubai-UAE



Emirates Airlines Staff Accommodation  
Dubai-UAE



I-Rise Tower  
Dubai-UAE



Bay Central  
Dubai-UAE

# PROJECTS



Silicon Central-Lulu mall at DSO  
Dubai-UAE



The Buildings by Daman  
Dubai-UAE



Deira Waterfront Development  
Dubai-UAE



Infinity Tower  
Dubai-UAE

# PROJECTS



Al Zahia City Centre  
Sharjah-UAE



One Central Hotel  
Dubai-UAE



Media City Hotel  
Dubai-UAE



Hyatt  
Dubai-UAE

# PROJECTS



RTA Enterprise Command & Control Centre  
Dubai-UAE



Mulberry Park Heights by EMAAR  
Dubai-UAE



Museum of Future  
Dubai-UAE



Tiara United Towers  
Dubai-UAE

# PROJECTS



Midtown Development at IMPZ  
Dubai-UAE



Harbour Views by EMAAR  
Dubai-UAE



DEWA Office, Al Quoz  
Dubai-UAE



RP Heights  
Dubai-UAE

# PROJECTS



Dubai Healthcare City  
Dubai-UAE



Jumeirah Lake Towers  
Dubai-UAE



Shoreline Apartments  
Dubai-UAE



Dubai Mall  
Dubai-UAE



Tiara Residence-Palm Jumeirah  
Dubai-UAE

# PROJECTS



Rosewood Hotel  
Abu Dhabi-UAE



Al Reem Island Zone ABCD  
Abu Dhabi-UAE



Golf Garden  
Abu Dhabi-UAE



Al Aryam Tower  
Abu Dhabi-UAE



Building Materials City  
Abu Dhabi-UAE

# PROJECTS



Al Raha Residence  
Abu Dhabi-UAE



First Gulf Bank  
Abu Dhabi-UAE



Khalifa University  
Abu Dhabi-UAE



Najmat Residence  
Abu Dhabi-UAE

# PROJECTS



Central Market  
Abu Dhabi-UAE



Centro Hotel Yas Island  
Abu Dhabi-UAE



Al Reem Plaza  
Abu Dhabi-UAE



ADFC  
Abu Dhabi-UAE



Danat Mall  
Abu Dhabi-UAE

# PROJECTS



Bab Al Bahr  
Ras Al Khaimah-UAE



Al Jaber Tower  
Fujairah-UAE



Al Marwa 3  
Sharjah-UAE



Mina Al Arab  
Ras Al Khaimah-UAE



Corniche Tower  
Ajman-UAE

# PROJECTS



Al Tawar Mall  
Doha-Qatar



Mirqab Mall  
Doha-Qatar



QP Headquarters  
Qatar



SECHQ  
Doha-Qatar



Doha Festival City  
Qatar

# PROJECTS



Al Baraha Tower  
Qatar



Al Jasra Twin Tower  
Qatar



Mall Of Qatar  
Qatar



Sidra Hospital  
Qatar



Viva Bahariya Building  
Qatar

# PROJECTS



Business Park Hotel  
Najma-Qatar



Le Boulevard  
Qatar



Doha High Rise Office Building  
Qatar



Al Faisal Tower  
Qatar



Barwa Commercial Avenue  
Qatar

# PROJECTS



Rafal Tower, Riyadh  
Kingdom of Saudi Arabia



Al Rajhi Bank HQ, Riyadh  
Kingdom of Saudi Arabia



Al Waseel Tower  
Kingdom of Saudi Arabia



Olaya Tower  
Kingdom of Saudi Arabia



Crowne Plaza ITCC, Riyadh  
Kingdom of Saudi Arabia

# PROJECTS



Serafi Mega Mall 4  
Kingdom of Saudi Arabia



Jabal Omar  
Kingdom of Saudi Arabia



Thakher city Project 2-Makkah  
Kingdom of Saudi Arabia



Jeddah Park 2  
Kingdom of Saudi Arabia



KAFD  
Kingdom of Saudi Arabia

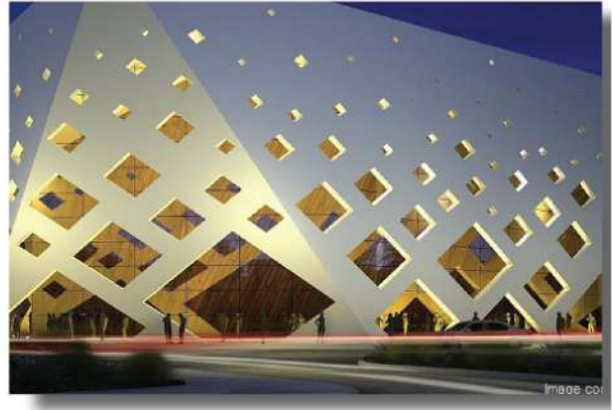
# PROJECTS



Holiday Inn  
Muscat



Crown Plaza OCEC 1  
Muscat



Kempinski Hotel  
Muscat



Mall of Oman



NBO Head Office  
Muscat

# CERTIFICATE OF REGISTRATION

This is to certify that the management system of:

## Hira Industries LLC

Address: Plot No 118 to 123, 307, 309 & 311, Al Ghail Industrial Park –  
RAKEZ, P.O. Box 9013, Ras Al Khaimah, United Arab Emirates  
has been registered by Intertek as conforming to the requirements of:

## ISO 9001:2015

The management system is applicable to:

Manufacture of Molded & Extruded Rubber Products, Aerofoam Closed  
Cell Polyolefin & Elastomeric Insulation Materials & Accessories, Self -  
Adhesive Tapes.

**Certificate Number:**

0112982-A

**Initial Certification Date:**

07 May 2018

**Date of Certification Decision:**

27 March 2024

**Issuing Date:**

27 March 2024

**Valid Until:**

06 May 2027



**intertek**



014

**Calin Moldovean**

President, Business Assurance

Intertek Certification Limited, 10A Victory Park,  
Victory Road, Derby DE24 8ZF, United Kingdom



# CERTIFICATE OF REGISTRATION

This is to certify that the management system of:

## Hira Industries LLC

Main Site: Plot No 118 to 123, 307, 309 & 311, Al Ghail Industrial Park –  
RAKEZ, P.O. Box 9013, Ras Al Khaimah, United Arab Emirates

has been registered by Intertek as conforming to the requirements of:

## ISO 14001:2015

The management system is applicable to:

Manufacture of Molded & Extruded Rubber Products, Aerofoam Closed  
Cell Polyolefin & Elastomeric Insulation Materials and Accessories, Self-  
Adhesive Tapes.

Certificate Number:  
0112983

Initial Certification Date:  
07 May 2018

Date of Certification Decision:  
27 March 2024

Issuing Date:  
27 March 2024

Valid Until:  
06 May 2027



intertek



014

**Calin Moldovean**  
President, Business Assurance

Intertek Certification Limited, 10A Victory Park,  
Victory Road, Derby DE24 8ZF, United Kingdom

Intertek Certification Limited is a UKAS  
accredited body under schedule of  
accreditation no. 014.



# CERTIFICATE OF REGISTRATION

This is to certify that the management system of:

## Hira Industries LLC

Main Site: Plot No 118 to 123, 307, 309 & 311, Al Ghail Industrial Park –  
RAKEZ, P.O. Box 9013, Ras Al Khaimah, United Arab Emirates

has been registered by Intertek as conforming to the requirements of:

## ISO 45001:2018

The management system is applicable to:

Manufacture of Molded & Extruded Rubber Products, Aerofoam Closed  
Cell Polyolefin & Elastomeric Insulation Materials and Accessories, Self-  
Adhesive Tapes, Air conditioner Flexible Ducts and Accessories.

Certificate Number:  
0101447

Initial Certification Date:  
07 May 2018

Date of Certification Decision:  
27 March 2024

Issuing Date:  
27 March 2024

Valid Until:  
06 May 2027



A handwritten signature in black ink, appearing to read 'Calin Moldovean', is written over a horizontal line.

**Calin Moldovean**  
President, Business Assurance

Intertek Certification Limited, 10A Victory Park,  
Victory Road, Derby DE24 8ZF, United Kingdom

Intertek Certification Limited is a UKAS  
accredited body under schedule of  
accreditation no. 014.



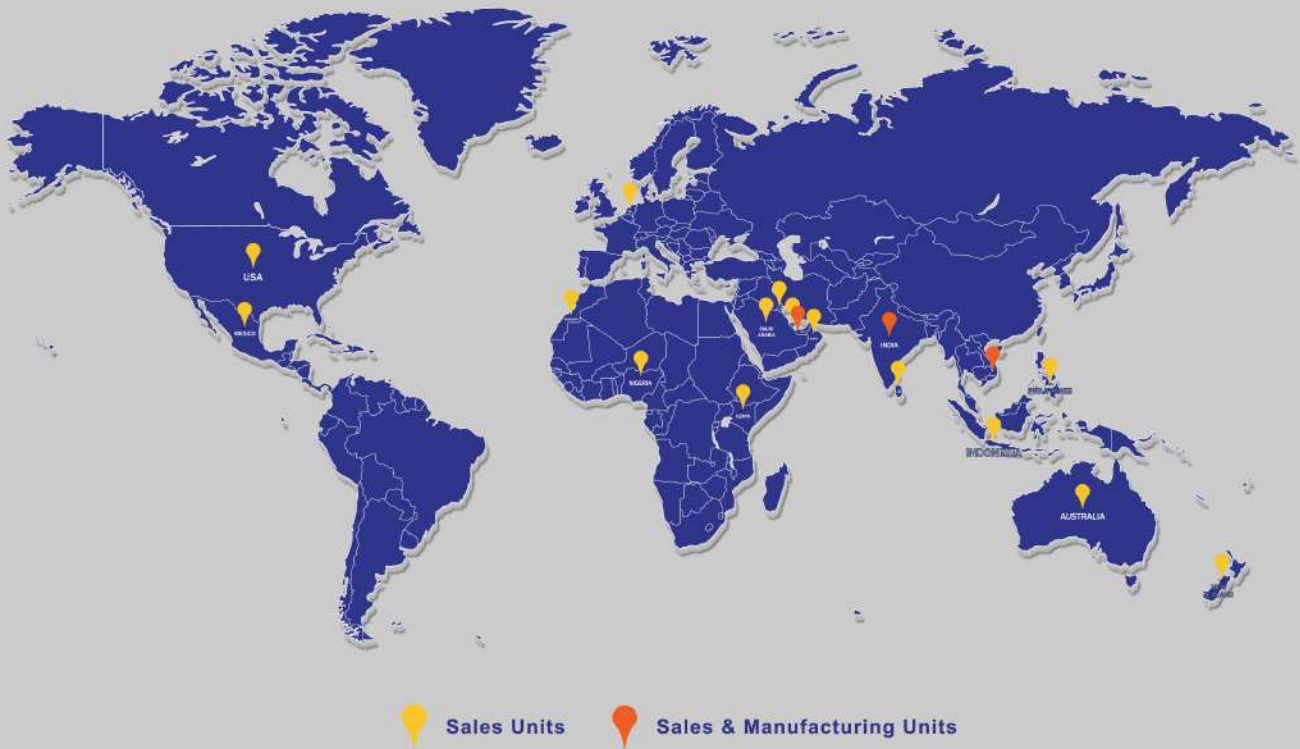
# SITE APPLICATIONS





Manufacturing Unit Located in UAE

## Global Footprint



### Hira Industries LLC

#### Head Office:

PO Box. 50673, DIP 2, Dubai, United Arab Emirates

+971 4 884 8414, +971 4 884 8434

enquiry@rhira.com, www.rhira.com

#### Factory:

PO Box. 9013, Al Ghail Industrial Area  
Ras Al Khaimah, United Arab Emirates.

+971 7 258 9006, +971 7 258 9008