

Contents

Page No.

Spring Hanger - DMSH	03
Cup Spring Mount - DMCS	04
Housed Spring Mount - DMHS	05
Restraint Spring Mount - DMCSSI	06
Anti vibration Hanger - DMRH	07
Anti vibration Mount - DMAVM	07
Ribbed Mounting Pad - DMAVRMP	08
Waffle Pad - DMAVWP	08
Square Cell Pad - DMAVSCP	09
Cork Sandwich Pad - DMAVCSP	09
Metal Sandwich Pad - DMAVMSP	10
Ribbed Multi Layer Pad - DMAVRMLP	10
Square Cell Multi Layer Pad - DMAVSCMLP	11
Rubber Floor Mounts - DMRFM	12
Inertia Base - DMIB	13

Applications

Used for a wide range of HVAC equipment such as compressors, air handling units, fans, pumps, chillers, etc.

Note: Research and development is an ongoing process with us. As improvements are made over time, specifications and dimensions may change without notice.

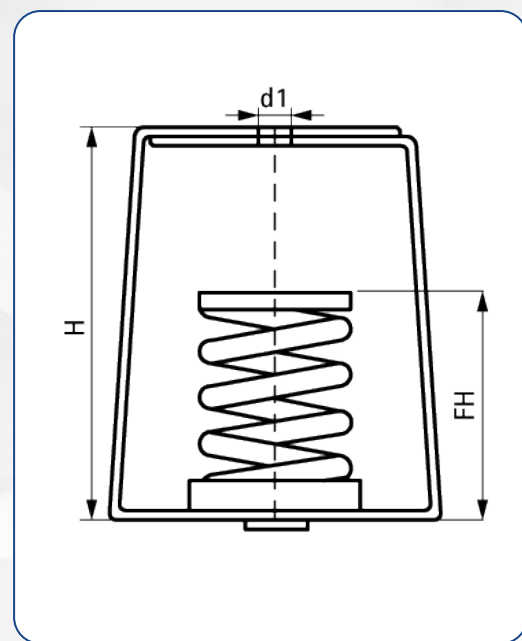
Spring Hanger

Features and Benefits

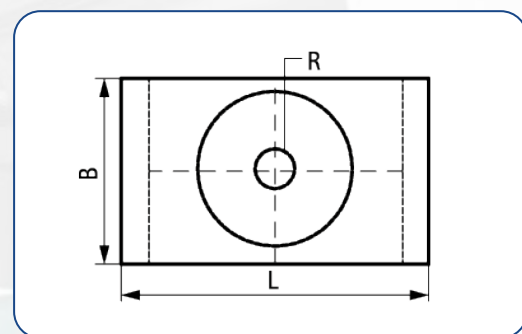
- Spring hangers are used to isolate suspended sources of both noise & vibration.
- Suspended mechanical equipments such as AHU's, FCU's, cabinet fans, piping and ductwork in close proximity to rotating mechanical equipments are typical applications of spring hangers.
- Springs are designed for 50% overload capacity.
- Brackets & springs are powder coated.
- Color coded springs are as per rated loads.
- The outer diameter should be at least 85% of the working height.
- Designed to meet BS 1726, class B.



Part No.	R	L mm	H mm	B mm	d1 mm	FH mm	Deflection mm	Fa,z (N)	Color
DMSH 25/10	M10	60	104	52	10.5	80	25	100	Red
DMSH 25/15								150	Purple
DMSH 25/20								200	Grey
DMSH 25/30								300	Green
DMSH 25/40								400	Blue
DMSH 25/60								600	Yellow
DMSH 25/100	M12	87	135	65	12.5	96	25	1,000	Black
DMSH 25/160								1,600	White
DMSH 25/200								2,000	Green
DMSH 25/250								2,500	Blue
DMSH 25/300								3,000	Red
DMSH 25/400	M16	100	172	85	16.5	115	25	4,000	Purple
DMSH 25/500								5,000	Grey
DMSH 25/600								6,000	Green
DMSH 25/800								8,000	Blue
DMSH 25/1050								10,500	Yellow
DMSH 25/1250								12,500	Black



Part No.	R	L mm	H mm	B mm	d1 mm	FH mm	Deflection mm	Fa,z (N)	Color
DMSH 50/10	M10	60	129	52	10.5	100	50	100	Red
DMSH 50/15								150	Purple
DMSH 50/20								200	Grey
DMSH 50/30								300	Green
DMSH 50/40								400	Blue
DMSH 50/60	M12	87	166	65	12.5	121	50	600	Yellow
DMSH 50/100								1,000	Black
DMSH 50/160								1,600	White
DMSH 50/200								2,000	Green
DMSH 50/250								2,500	Blue
DMSH 50/300	M16	106	210	85	16.5	155	50	3,000	Red
DMSH 50/400								4,000	Purple
DMSH 50/500								5,000	Grey
DMSH 50/600								6,000	Green



* Tolerances in dimensions are in accordance with international standards.

Cup Spring Mount

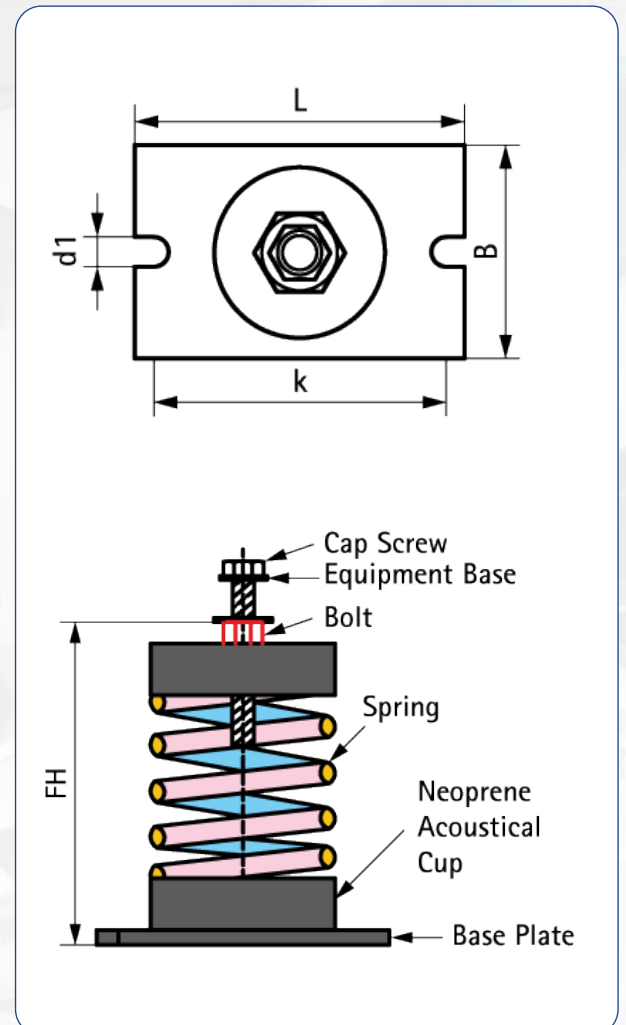


Features and Benefits

- Cup Spring Mounts are used to isolate noise from floor mounting equipments.
- Pumps, packaged air handling units, air conditioning units, centrifugal & axial fans, inertia bases etc.
- Color coded springs are as per rated loads.
- Outer diameter is equal to at least 85% of working height.
- Springs are designed to accommodate a 50% overload capacity.
- Neoprene top with bottom with a non-skid bolt-down base, and a plated leveling/lock bolt.
- Springs are powder coated.
- Designed to meet BS1726, Class B.

Part No.	Bolt	L mm	B mm	d1 mm	k mm	FH mm	Deflection mm	Fa,z (N)	Color
DMCS 25/10	M16	110	65	M10	100	115	25	100	Red
DMCS 25/15								150	Purple
DMCS 25/20								200	Grey
DMCS 25/30								300	Green
DMCS 25/40								400	Blue
DMCS 25/60	M16	110	75	M10	100	125	25	600	Yellow
DMCS 25/100								1,000	Black
DMCS 25/160								1,600	White
DMCS 25/200								2,000	Green
DMCS 25/250								2,500	Blue
DMCS 25/300	M20	140	100	M12	125	168	25	3,000	Red
DMCS 25/400								4,000	Purple
DMCS 25/500								5,000	Grey
DMCS 25/600								6,000	Green
DMCS 25/800								8,000	Blue
DMCS 25/1050								10,500	Yellow
DMCS 25/1250								12,500	Black

Part No.	Bolt	L mm	B mm	d1 mm	k mm	FH mm	Deflection mm	Fa,z (N)	Color
DMCS 50/10	M16	110	65	M10	100	135	50	100	Red
DMCS 50/15								150	Purple
DMCS 50/20								200	Grey
DMCS 50/30								300	Green
DMCS 50/40								400	Blue
DMCS 50/60	M16	110	75	M10	100	150	50	600	Yellow
DMCS 50/100								1,000	Black
DMCS 50/160								1,600	White
DMCS 50/200								2,000	Green
DMCS 50/250								2,500	Blue
DMCS 50/300	M20	140	100	M12	125	208	50	3,000	Red
DMCS 50/400								4,000	Purple
DMCS 50/500								5,000	Grey
DMCS 50/600								6,000	Green



* Tolerances in dimensions are in accordance with international standards.

Housed Spring Mount

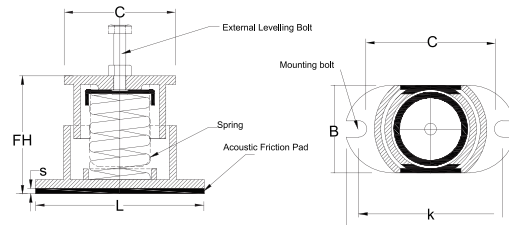
Features and Benefits

- Housed Spring Mounts are designed to provide horizontal stability, high load capacity & protective spring enclosure.
- All mounts have external leveling arrangement, capable of compensating for full static deflection.
- Inner walls of lower casing have resilient rubber snubbers.
- Deflection is at rated load having a tolerance of 15%.
- Mountings must be adjusted so that upper housing clears lower housing by at least 6mm & not more than 12mm.
- Application examples include: chiller, AHU's, pumps, centrifugal / axial fans, condensing units, roof top packaged units, reciprocating compressors, DG sets, punch presses, drop hammers & floor pipe supports (normally at first few pipe support points leading from isolated equipments).
- Springs are powder coated.
- All mounts have (APPROX.) 50% overload capacity.
- Designed to meet BS1726, class B.

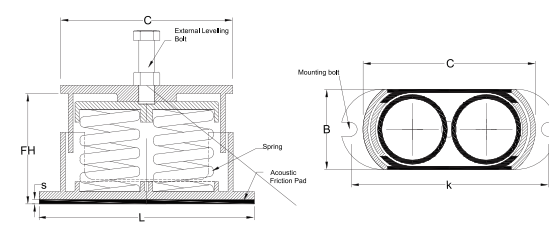


Part No.	Levelling Bolt Dia.	L mm	B mm	C mm	S mm	Mounting Bolt Dia.	K mm	FH mm	Deflection mm	Fa,z (N)	Color
DMHS1-060	M12	156	81	103	5	M12	140	109	25	600	Yellow
DMHS1-100										1,000	Black
DMHS1-160										1,600	White
DMHS1-200										2,000	Green
DMHS1-250										2,500	Blue
DMHS1A-300	M16	173	98	120	5	M12	155	135	25	3,000	Red
DMHS1A-400										4,000	Purple
DMHS1A-500										5,000	Grey
DMHS1A-600										6,000	Green
DMHS1A-800										8,000	Blue
DMHS1A-1050										10,500	Yellow
DMHS1A-1250										12,500	Black
DMHS2-600	M20	263	98	210	5	M16	245	145	25	6,000	Red
DMHS2-800										8,000	Purple
DMHS2-1000										10,000	Grey
DMHS2-1200										12,000	Green
DMHS2-1600										16,000	Blue
DMHS2-2100	21,000	Yellow									
DMHS2-2500										25,000	Black
DMHS4-1270										12,700	Red
DMHS4-1420										14,200	Purple
DMHS4-1640										16,400	Orange
DMHS4-1900										19,000	Green
DMHS4-1970										19,700	Grey
DMHS4-2210										22,100	White
DMHS4-2610										26,100	Gold
DMHS4-3000										29419.9	Light Purple
DMHS4-3600										53530.9	Red
DMHS4-4000										439226.6	Grey

Part No.	Levelling Bolt Dia.	L mm	B mm	s mm	Mounting Bolt Dia.	k mm	FH mm	Deflection mm	Fa,z (N)	Color
DMHS1-50/060	M12	160	92	5	M10	147	141	50	600	Yellow
DMHS1-50/100									1,000	Black
DMHS1-50/160									1,600	White
DMHS1-50/200									2,000	Green
DMHS1-50/250									2,500	Blue
DMHS1A-50/300	M16	200	115	5	M12	180	198	50	3,000	Red
DMHS1A-50/400									4,000	Purple
DMHS1A-50/500									5,000	Grey
DMHS1A-50/600									6,000	Green
DMHS2-50/600									6,000	Red
DMHS2-50/800									8,000	Purple
DMHS2-50/1000									10,000	Grey
DMHS2-50/1200	12,000	Green								



DMSH1 & DMHS1A



DMHS2

* Tolerances in dimensions are in accordance with international standards.

Restraint Spring Mount



DMCSSIA

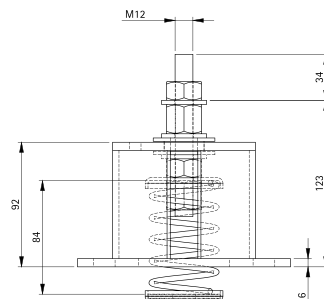
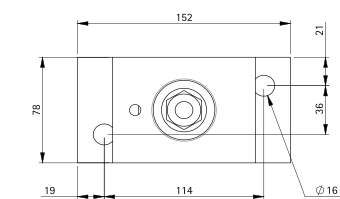


DMCSIB

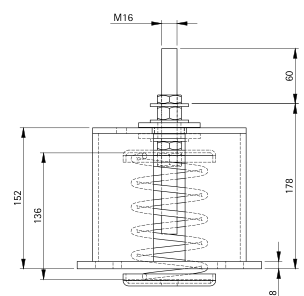
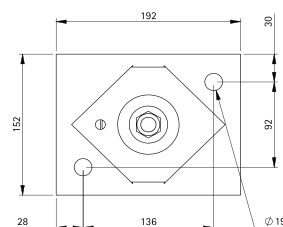
Features and Benefits

- Fabricated using solid steel.
- Powder coated finish.
- Spring made of steel with zinc electroplating.
- Incorporated with leveling device.
- Anti-skid rubber pads.
- Colour coded springs for easy and quick identification.
- Supplied with base plate for installation.
- Designed to meet BS1726, class B.

Part No.	Deflection (mm)	F _{a,z} (N)	Color
DMCSSIA-25/025	25	225	Yellow
DMCSSIA-25/045		441	Dark Blue
DMCSSIA-25/070		667	Dark Brown
DMCSSIA-25/115		1,108	Red
DMCSSIA-25/170		1,667	Dark Green
DMCSSIA-25/200		2,001	Orange
DMCSSIA-25/300		3,119	Black
DMCSIB-50/090	50	892	Yellow
DMCSIB-50/130		1,334	Dark Blue
DMCSIB-50/180		1,775	Dark Brown
DMCSIB-50/300		2,893	Red
DMCSIB-50/400		4,002	Dark Green
DMCSIB-50/550		5,336	Orange
DMCSIB-50/600		6,229	Black
DMCSIB-50/700		6,896	Grey
DMCSIB-50/750		7,737	White
DMCSIB-50/800		8,004	Purple
DMCSIB-50/950		9,348	Light Green
DMCSIB-50/1000		9,790	Light Blue
DMCSIB-50/1180		11,124	Light Brown
DMCSIB-50/1200		11,575	Silver
DMCSIB-50/1250		12,458	Maroon



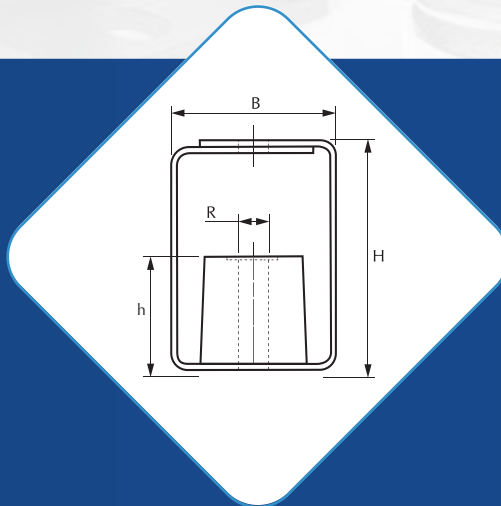
DMCSSIA



DMCSIB

* Tolerances in dimensions are in accordance with international standards.

Anti Vibration Hanger

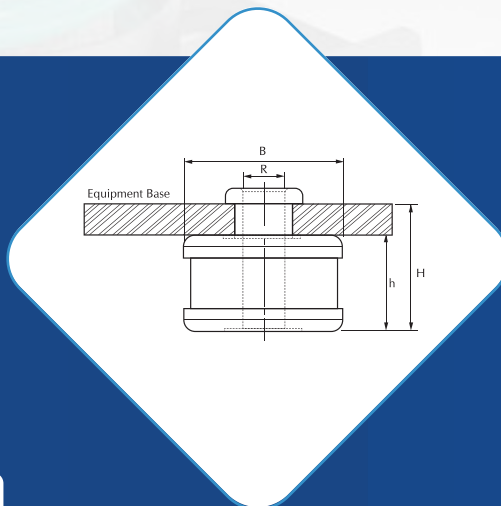


Features and Benefits

- Constructed with a neoprene element encased between two electro-galvanized steel caps.

Part No.	R	B (mm)	H (mm)	h (mm)	Deflection (mm)	Fa,z (N)	Color
DMRH10	M10	55	72	40	8	100	Blue
DMRH20						200	Green
DMRH30						300	Red
DMRH50						500	Yellow
DMRH70					10	700	Brown
DMRH120						12,000	Orange

Anti Vibration Mount



Features and Benefits

- Constructed with a neoprene element encased between two electro-galvanized steel caps.
- Compact model for space saving installations.
- Extended design prevents metal to metal contact.

Part No.	R	B (mm)	H (mm)	h (mm)	Deflection (mm)	Fa,z (N)
DMAVM-90	M10	41	37	25	4	900
DMAVMC-60	M10	32	27	19	4	600

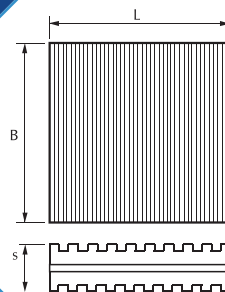
* Tolerances in dimensions are in accordance with international standards.

Ribbed Mounting Pad

Features and Benefits

- Easy installation.
- Alternate high-low ribbed construction.
- Pads can be cut slightly larger than the size of the leg or machine using shears or a knife.
- Multiple layers of Ribbed Mounting Pad can be used to increase deflection.

Part No.	L (mm)	B (mm)	s (mm)	Rec. Load (N)	Fa,z (N)
DMAVRMP381818	450	450	10	4,100	4,800
DMAVRMP381212	300	300	10	2,750	3,100
DMAVRMP380808	200	200	10	1,800	2,050
DMAVRMP380606	150	150	10	1,350	1,500
DMAVRMP380404	100	100	10	900	1,050
DMAVRMP380303	75	75	10	650	750

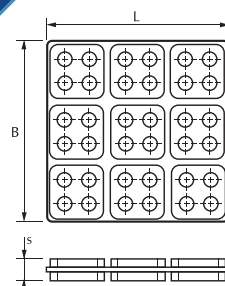


Waffle Pad

Features and Benefits

- Easy installation.
- Bolting is not required.
- The design includes built-in section caps.
- Tool-free, easy-cut design provides flexibility on the job site.

Part No.	L (mm)	B (mm)	s (mm)	Rec. Load (N)	Fa,z (N)
DMAVWP341818	450	450	19	4,100	4,800
DMAVWP341212	300	300	19	2,750	3,100
DMAVWP340808	200	200	19	1,800	2,050
DMAVWP340606	150	150	19	1,350	1,500
DMAVWP340404	100	100	19	900	1,050
DMAVWP340202	50	50	19	450	560



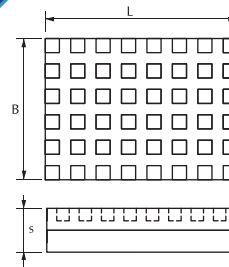
* Tolerances in dimensions are in accordance with international standards.

Square Cell Pad

Features and Benefits

- Square Cell Pad consist of 81 sections of size 50 mm separated by a thin web which can be easily cut to fit loading requirements.
- Excellent high-frequency sound attenuation compared to waffle pads.
- Standard size for easy handling.

Part No.	L (mm)	B (mm)	s (mm)	Rec. Load (N)	Fa,z (N)
DMAVSCP341818	450	450	19	4,500	6,000

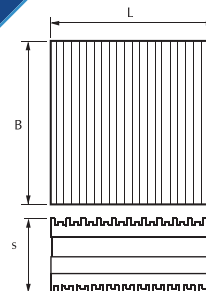
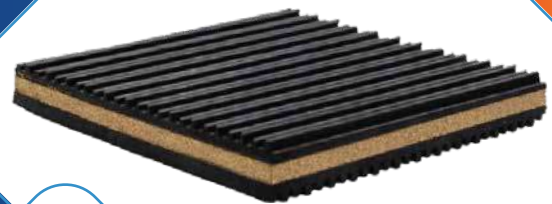


Cork Sandwich Pad

Features and Benefits

- Cork Sandwich Pads are laminated pads with 3/8" thick, close-grained cork. These pads are made of alternating 1/4" low and high ribbed neoprene rubber layers.
- Easy installation.
- Bolting is not required.
- Offers the highest level of sound attenuation and vibration insulation.

Part No.	L (mm)	B (mm)	S (mm)	Rec. Load (N)	Fa,z (N)
DMAVCSP781818	450	450	22	7,200	9,000
DMAVCSP781212	300	300	22	4,800	6,000
DMAVCSP780808	200	200	22	3,200	4,000
DMAVCSP780606	150	150	22	2,400	3,000
DMAVCSP780404	100	100	22	1,600	2,000
DMAVCSP780303	75	75	22	1,200	1,500



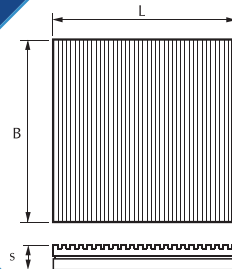
* Tolerances in dimensions are in accordance with international standards.

Metal Sandwich Pad

Features and Benefits

- Metal Sandwich Pads are constructed of a steel plate bonded between ribbed & vibration pads.
- Designed for high load capacity.

Part No.	L (mm)	B (mm)	s (mm)	Rec. Load (N)	Fa,z (N)
DMAVMSP11818	450	450	20	22,000	33,000
DMAVMSP11212	300	300	20	18,000	27,000
DMAVMSP10808	200	200	20	15,000	22,500
DMAVMSP341818	450	450	20	22,000	33,000
DMAVMSP341212	300	300	20	18,000	27,000
DMAVMSP340808	200	200	20	15,000	22,500
DMAVMSP340606	150	150	20	12,500	18,750
DMAVMSP340404	100	100	20	7,500	11,250
DMAVMSP340303	75	75	20	6,000	9,000

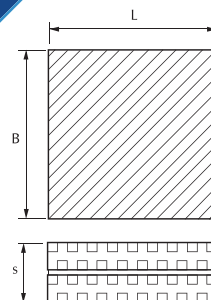


Ribbed Multi Layer Pad

Features and Benefits

- Ribbed Multi-Layer Pads are constructed with two layers of thick ribbed pads, enclosing a 1.5 mm thick steel plate at the center.
- An alternate rib design with ribs positioned both below and above, joined at right angles to each other to prevent skidding.
- Diagonal ribs help distribute the load evenly.

Part No.	L (mm)	B (mm)	s (mm)	Rec. Load (N)	Fa,z (N)
DMAVRMLP1380606	152	152	35	6,300	9,000
DMAVRMLP1380404	102	102	35	2,800	4,000



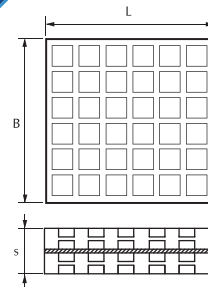
* Tolerances in dimensions are in accordance with international standards.

Square Cell Multi Layer Pad

Features and Benefits

- Consists of the following:
3x layers of square pads, 2 x layers of steel plates.
- Due to the suction pockets formed by the square cell design, the pad provides better grip on the floor surface.
- Offers a higher load capacity than the Ribbed Multi-Layer Pad.

Part No.	L (mm)	B (mm)	s (mm)	Rec. Load (N)	Fa,z (N)
DMAVSCMLP1380606	152	152	30.5	7,900	10,000
DMAVSCMLP1380404	102	102	30.5	3,500	4,500



* Tolerances in dimensions are in accordance with international standards.

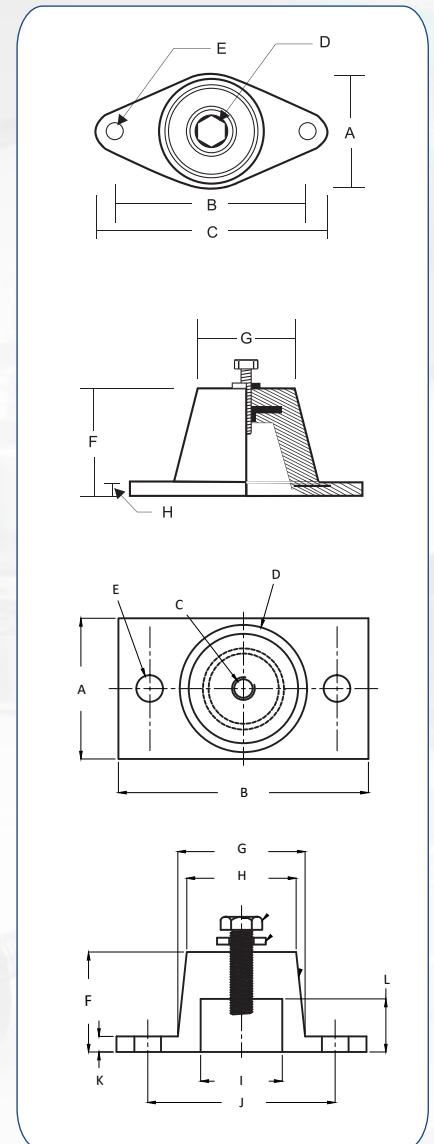
Rubber Floor Mounts

Features and Benefits

- Suitable for floor mounting.
- Ribbed/non-skid design provides grip with the surface, but it is recommended to fasten the product for better results.
- Steel-reinforced rubber for enhanced strength.
- Threading provided at top for fastening.
- Material : EPDM Neoprene
- FMC and FMD are rectangle base type

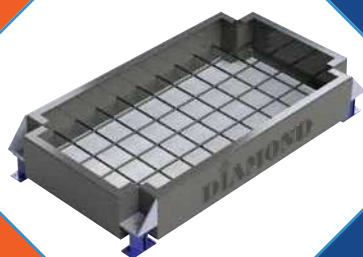


Model No.	Type	Rated Load (Lbs)	Rated Load (Kgs.)	Deflection (Inches)	Color Code	Dimensions in mm							
						A	B	C	D	E	F	G	H
DMRFMA15	Small	33	15	0.32	Blue	45	60	80	6	8.5	32	35	5
DMRFMA20		44	20		Red								
DMRFMA30		66	30		Green								
DMRFMA50		110	50		Black								
DMRFMA60	Medium	130	60	0.40	Blue	60	76	98	10	8.5	45	45	5.5
DMRFMB75		165	75		Red								
DMRFMB100		220	100		Green								
DMRFMB175		385	175		Black								
DMRFMC90	Big	200	90	0.47	Blue	92	120	150	12	14	90	70	10
DMRFMC125		275	125		Red								
DMRFMC175		385	175		Green								
DMRFMC225		500	225		Black								
DMRFMD350		770	350		Blue								
DMRFMD450		990	450		Red								
DMRFMD600		1320	600		Green								
DMRFMD1000		2200	1000		Black								



* Tolerances in dimensions are in accordance with international standards.

Inertia Base

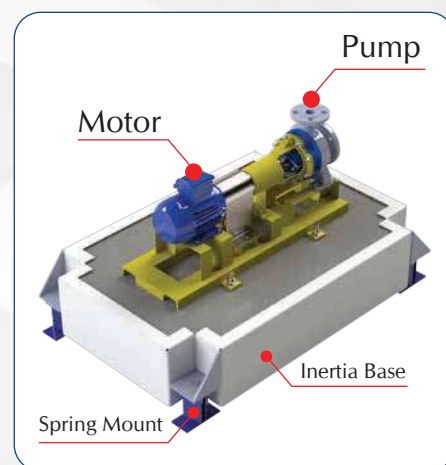


Features and Benefits

- The inertia base is specially designed and engineered for pouring concrete, which, after curing, is used as a mechanically vibration-isolated, reinforced inertia base for the equipment.
- These inertia bases are recommended for use under heavy startup and shutdown vibration amplitude equipment, such as generators, IC engines, large fans, centrifugal chillers, etc.
- The inertia base is made from standard structural channels or formed steel channels, depending on the design. It uses 12 mm reinforcement rods welded at 150 mm intervals for enhanced concrete strength. The inertia base is supplied with a grey oxide primer coating.
- The optimized vibration isolator will be supplied together as per the design.

Part No	Base width in mm								
	500	550	600	700	750	1000	1250	1500	1750
DMIB500	150	150	150	150	-	-	-	-	-
	200	200	200	200	-	-	-	-	-
	250	250	250	250	-	-	-	-	-
DMIB750	150	150	150	150	150	-	-	-	-
	200	200	200	200	200	-	-	-	-
	250	250	250	250	250	-	-	-	-
DMIB800	150	150	150	150	150	150	-	-	-
	200	200	200	200	200	200	-	-	-
	250	250	250	250	250	250	-	-	-
DMIB900	150	150	150	150	150	150	-	-	-
	200	200	200	200	200	200	-	-	-
	250	250	250	250	250	250	-	-	-
DMIB1000	150	150	150	150	150	150	150	-	-
			200	200	200	200	200	-	-
			250	250	250	250	250	-	-
DMIB1100	150	150	150	150	150	150	150	-	-
			200	200	200	200	200	-	-
			250	250	250	250	250	-	-
DMIB1250	150	150	150	150	150	150	150	-	-
			200	200	200	200	200	-	-
			250	250	250	250	250	-	-
DMIB1300	150	150	150	150	150	150	150	150	-
			200	200	200	200	200	200	-
			250	250	250	250	250	250	-
DMIB1500	150	150	150	150	150	150	150	150	-
			200	200	200	200	200	200	-
			250	250	250	250	250	250	-
DMIB1750	150	150	150	150	150	150	150	150	150
			200	200	200	200	200	200	200
			250	250	250	250	250	250	250
DMIB2000	150	150	150	150	150	150	150	150	150
			200	200	200	200	200	200	200
			250	250	250	250	250	250	250
DMIB2250	150	150	150	150	150	150	150	150	150
		200	200	200	200	200	200	200	200
			250	250	250	250	250	250	250
DMIB2500	150	150	150	150	150	150	150	150	150
		200	200	200	200	200	200	200	200
			250	250	250	250	250	250	250
DMIB2750	150	150	150	150	150	150	150	150	150
	200	200	200	200	200	200	200	200	200
			250	250	250	250	250	250	250
DMIB3000	150	150	150	150	150	150	150	150	150
	200	200	200	200	200	200	200	200	200
			250	250	250	250	250	250	250

Base length in mm



The length and width dimensions shown include the actual frame size and may not account for the length and width of the bracket.

The inertia base design and dimensions are customized based on the pump size and weight.

* Tolerances in dimensions are in accordance with international standards.

Notes

A large, empty white rectangular area intended for taking notes, occupying the central portion of the page.

Notes

A large, empty white rectangular area intended for taking notes, occupying the central portion of the page.

GLOBAL FOOTPRINT



Manufacturing Units



Registered Entities



Channel Partners

DIAMOND

Hira

 www.rhira.com

Manufactured by Hira Industries LLC

P.O. Box: 50673, Dubai Investments Park 2,
Dubai, U.A.E.

 +971 4 884 8414

 enquiry@rhira.com

 www.rhira.com

