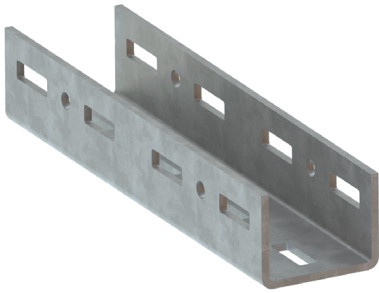


Maxx Linear Connector



Features and Benefits

- for linear connection of Maxx profiles
- type MX80
- advised to be used with min. 8 Maxx Hammerfix
- U-shape gives the opportunity to create one flat surface (for example to install big units on top of the Maxx profile)
- material: steel S235JR
- hot dip galvanized

Part No.	Type	L (mm)	B (mm)	H (mm)	s (mm)	d1 (mm)	K (mm)	Fa,x (N)	Pack 1
DMC6589318	IP80	380	93	71	6.0	45x14	100	8,250	-

