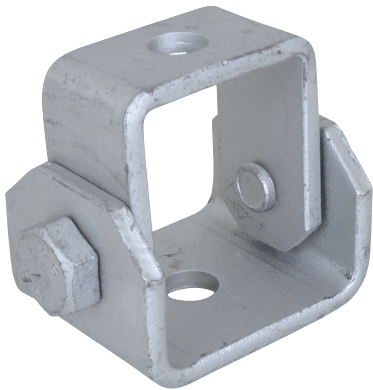


Adjustable Connectors



Features and Benefits

- especially for angled installation with bracings
- suitable for fixing to walls or fixing rails
- adjustable angle up to 90°
- with holes Ø13 mm
- material: steel
- surface protection available:
 - for DMC66588818-ZP - zinc plated
 - for 66588818 - BIS Ultra Protect® 1000
- suitable for in-and outdoor applications

Part No.	For Rail	L (mm)	B (mm)	H (mm)	d1 (mm)	d2 (mm)	Fa,z (N)	ST	Pack 1
66588818	Strut	50	78	63	13	13	5,000	BIS Ultra Protect® 1000	10
DMC66588818-ZP	Strut	50	78	63	13	13	5,000	Zinc plated	10

Hot dip galvanized available upon request.
Max. allowed load: when used at an angle of 45° on wall/ceiling.

