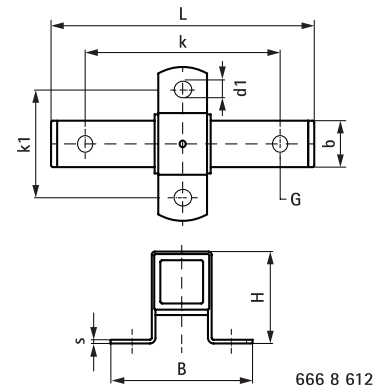
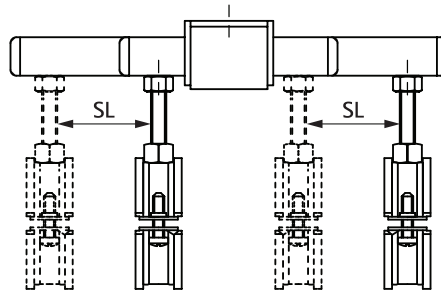
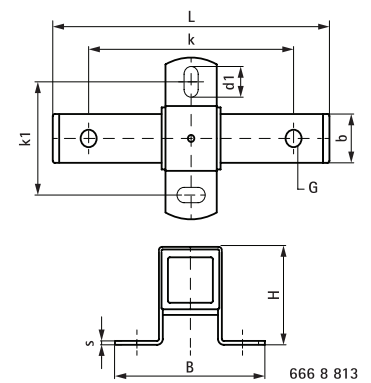


## Expansion Guide Assembly (BUP1000)



### Features and Benefits

- stable and safe double support for pipe expansion
- fix directly on the building structure or in combination with rail systems
- suitable for ceiling mounting (suspended) and floor mounting (standing mounted)
- tapped with different sized threads on opposing faces
- a variety of connection possibilities, can be combined with Bifix® G2, Plain Split Clamp or HD pipe clamps
- material: metal parts made of steel; sliding plates made of PTFE (Teflon®)
- surface protection:
  - product is part of the BIS UltraProtect® 1000 system
  - suitable for in- and outdoor applications
  - stands min. 1,000 hours salt spray test (max. 5% redrust) according to ISO 9227



| Part No.  | G (mm)       | L (mm) | B (mm) | H (mm) | b (mm) | s (mm) | d1 (mm) | k (mm) | k1 (mm) | SL (max.) (mm) | Fa,z (N) | Pack 1 |
|-----------|--------------|--------|--------|--------|--------|--------|---------|--------|---------|----------------|----------|--------|
| 666 8 612 | Ø10<br>Ø12   | 170    | 135    | 46     | 35     | 3.0    | Ø13     | 120    | 100     | 60             | 1,500    | 5      |
| 666 8 813 | Ø 13<br>Ø 17 | 255    | 146    | 90     | 40     | 5.0    | 20xØ13  | 200    | 100     | 120            | 7,500    | 5      |

*Fa,z is total functional load.*