



DIAMOND TAPES™
 PRODUCT PORTFOLIO



***BUILDING
 A BOND
 THAT LASTS***



a Mativ
 Brand



Contents

About the Company	04
About the Brand	05

HVAC Industry

Aluminum Foil Tapes	09
FSK Tapes	09
Aluglass Tapes	10
Alupet Tapes	10
Aeroclad Tapes	11
NBR Foam Tapes	12
XLPE Single-Sided Foam Tapes	12
PE Single-Sided Insulation Closing Tapes	13
Bi-Directional Reinforced Foil Tapes	13

Aluminum and Glass Industry

Surface Protection Tapes	15
Double Glazer Spacer Tapes	15
Structural Glazing Tapes	16

Signage, Industrial and Construction Industry

Double Sided PE Foam Tapes	18
Transfer Tapes	18
Application Tapes: Paper and Film Based	19
Red Polyester Tapes	19
Scapa Double Sided Foam Tapes	20
Scapa Single Sided Foam Tapes	20
tesa Tapes	21

Foam, Gasket and Sealant Tapes

Reinforced Neoprene Foam Tapes	23
Eva Foam Tapes	23
Butyl Tapes	24
Sound Absorbtion PU Foam Tapes	24
Die Cut Foam and Tapes	25
EPDM Foam Tapes	25

Consumer and General Purpose Tapes

Duct Tapes	27
Anti-Slip Tapes	27
Cross-Weave Filament Tapes	28
Tissue Tapes	28
Kraft Paper Tapes	29
Reflective Tapes	29

ABOUT THE COMPANY

Founded in the UAE in 1980, Hira Group began with a simple yet powerful belief: quality and integrity must be built into everything we create. What started as an entrepreneurial vision has grown into a global, family-led organisation operating across the Middle East, India, Africa, the USA, and the Asia-Pacific region.

Over the decades, Hira has evolved into a trusted partner for complex HVAC, MEP, infrastructure, and construction projects—driven by innovation, technical expertise, and a commitment to reliable performance. Our focus has always been clear: delivering smarter, safer, and more sustainable solutions for the built environment.

Diamond Tapes is an extension of this legacy—engineered to deliver precision, durability, and dependable sealing solutions where performance truly matters. Built on Hira’s foundation of trust and manufacturing excellence, Diamond Tapes supports industries that demand consistency, strength, and long-term reliability.



Manufacturing Units



Registered Entities



Channel Partners



ABOUT THE BRAND

Diamond® Tapes, a flagship division of Hira Group, has been a trusted manufacturer of high-performance specialty adhesive tapes since 1996, serving industrial and consumer markets across multiple regions.








Headquartered in Dubai, UAE, with a modern manufacturing facility in Ras Al Khaimah, Diamond Tapes division operates with a strong focus on operational excellence, process control, and product consistency.

Our RAK facility is equipped with advanced production lines and continuously upgraded systems to meet evolving global standards and demanding application requirements.

Driven by a culture of quality, reliability, and continuous improvement, Diamond Tapes delivers precision-engineered adhesive solutions designed to perform in critical environments - supporting customers who value long-term performance, scalability, and trust.

Industries We Serve

We maintain a strong presence across the HVAC and aluminium façade sectors, while actively expanding into signage, advertising and printing, OEM, and packaging industries. Our growth is driven by application-focused adhesive solutions, engineered to meet precise client specifications and evolving performance requirements.

-  HVAC Industry
-  Aluminum and Glass Industry
-  Industrial and Construction Industries
-  Printing, Signage and advertising Industry
-  Consumer and General Purpose
-  Packaging Industry
-  Automotive, electrical & electronics and OEM Industry



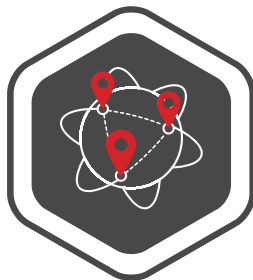
Quality, Design and Development

We operate a fully equipped Quality Control (QC) Laboratory with advanced analytical instruments, functioning under stringent quality standards to ensure product reliability, consistency, and compliance with internal specifications and customer requirements. The lab is staffed by experienced analysts who follow validated methods, SOPs, and Good Laboratory Practices (GLP), with strong emphasis on documentation and traceability.

Our Global R&D Laboratory, an ISO/IEC 17025:2017 internationally accredited facility, serves as our innovation center. Equipped with state-of-the-art pilot machines and testing equipment, it focuses on developing new products, improving existing ones, and delivering scalable, high-quality solutions to meet evolving market needs.

International Brands

In addition to our own Diamond and Aerofoam brand products, we are also the authorized distributor of SCAPA UK Tapes and tesa® Germany Tapes.



Regional and International Presence

The ATD product portfolio has a very strong presence in the UAE, Saudi Arabia, Kuwait, Oman, Qatar, Bahrain, and in the other middle-east countries. The brand is now widely accepted and made its presence felt in the African, European, Australian, Southeast Asian and now, in the US markets. This is a testimony to the high quality standards the division has adapted and maintained through the years.

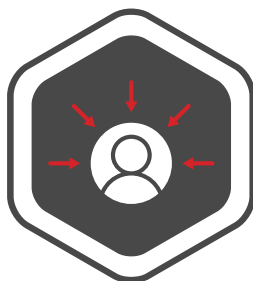
Certification and Standards

Hira Industries Adhesive Tapes Division is certified to Integrated Management System comprising of ISO 9001:2015, ISO 14001:2015 and ISO 45001:2018. And our Global R&D Center is ISO/IEC 17025:2017 Certified with International Accreditation body. Our Tapes are tested in accordance with ASTM, UL, BS, EN and other International standards.



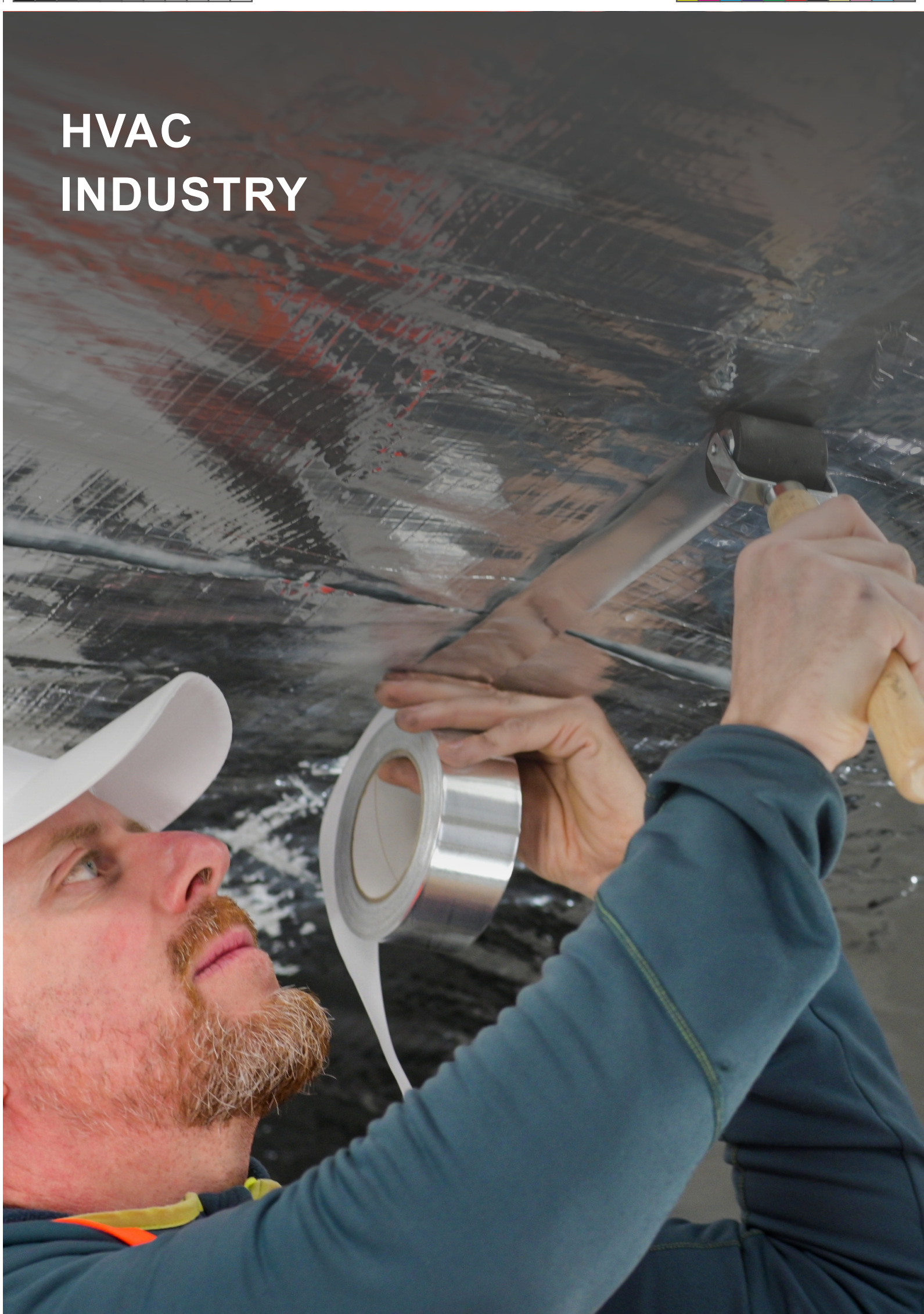
Customer Focus Approach

The division is dedicated to provide total client satisfaction that leads to achieving customer loyalty. Service-oriented approach has always been our priority which we consider one of our strengths while identifying technical superiority as our core competence.

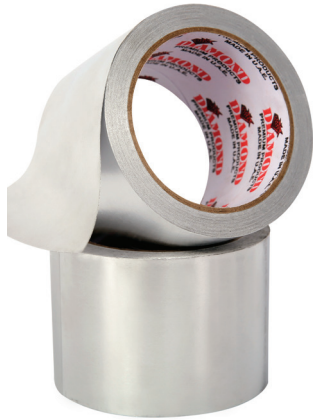




HVAC INDUSTRY



Aluminum Foil Tapes



Diamond Aluminum Foil Tape consists of an aluminum foil backing, combined with a high performance adhesive and protected by an easy release silicone paper liner.

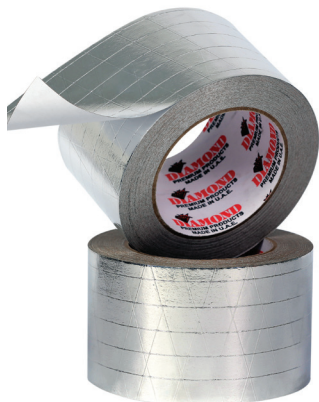
Applications

- HVAC insulation sealing, duct lamination
- Roofing joint sealing
- Refrigeration vapor barrier
- Indoor general sealing

Available in : Solvent Based, Rubber Based & FR Grade



FSK Tapes

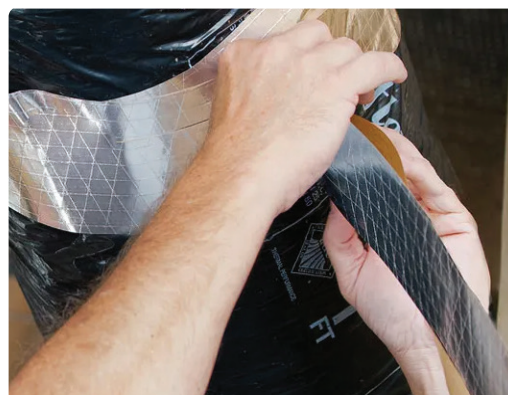


Diamond FSK Tape is a combination of Aluminum Foil, Scrim and Kraft Paper coated with a high-performance adhesive and protected by an easy release silicone paper liner for specialized HVAC insulation applications.

Applications

- Air-conditioning duct lamination
- Foil-rock wool bonding
- Roofing flashing joint sealing
- Refrigeration duct vapor sealing
- Indoor general-purpose sealing

Available in : Solvent Based & Rubber Based



Aluglass Tapes



Diamond Aluglass Tape is made-up of a high tensile strength aluminum glass fiber cloth backing (aluminum foil + glass fiber cloth reinforcement), combined with a high-performance adhesive and laminated by an easy release silicone paper liner for specialized HVAC insulation applications.

Applications

- Duct board joint sealing
- Air-conditioning duct lamination,
- Foil-faced rock wool bonding,
- Roofing flashing joint sealing, refrigeration duct vapor sealing
- Indoor general-purpose sealing

Available in : Solvent Based, Rubber Based & FR Grade



Alupet Tapes



Diamond/Aerofoam Alupet Tape is a special aluminum foil tape reinforced with PET film backing combined with strong solvent acrylic adhesives and easy release paper. It is recommended as a closing tape for

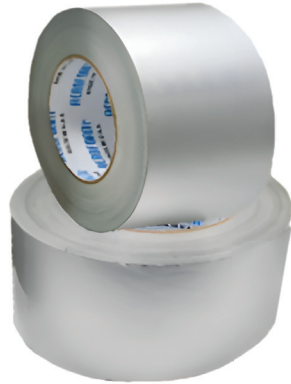
Applications

- Aerofoam XLPE insulation closing
- air-conditioning duct lamination
- roofing flashing joint sealing, refrigeration duct vapor sealing
- indoor general-purpose sealing





Aeroclad Tapes



AEROCLAD TAPE is a zero permeability, multi-layered laminate coated with a strong solvent Acrylic based adhesive. This product has superior resistance to weathering and extreme environmental conditions. This product is designed for use as a barrier for insulation cladding applications. Provides a strong protective layer with weather resistance, performing effectively in hot and cold environments.

Features

- It offers excellent UV resistance
- strong adhesion in all weather conditions, high strength
- with puncture and tear resistance and good flexibility

Applications

- Used in insulation and cladding
- Roofing, joints and pipe insulations
- For vapor barriers and radiant barrier in HVAC and building insulation systems.



Available types : N-Clad Tape , Clad Tape and Barrier Clad Tape



NBR Foam Tapes

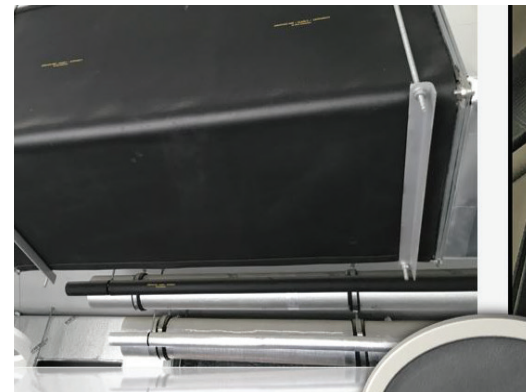
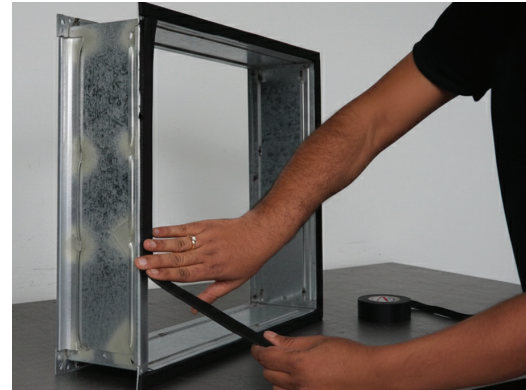


Aerofoam NBR (Nitrile Butadiene Rubber) Foam Tape consists of a soft and flexible closed-cell NBR foam coated with a strong hot-melt and solvent based adhesive and laminated to a brown or white silicone release paper liner. The tape has excellent flexibility and is suitable for thermal insulation and duct gasket purposes. Available Thicknesses: 3 mm, 6 mm, 9 mm, 13 mm and 20 mm

Applications

- Insulation- hot or cold pipe wrapping
- Ideal for HVAC and refrigeration
- Provides water, air, dust seal
- For Gasketing purpose

Available in : FR grade, Double-sided, Reinforced & Retail pack.



XLPE Single-Sided Foam Tapes



Diamond Single-sided XLPE (Cross-linked Polyethylene) Foam Tape has a strong hot melt adhesive which is laminated with a white silicone release paper liner. The tape has good insulation properties and hence mainly used for thermal insulation applications.

Applications

- Insulation – hot or cold piping and fittings
- Indoor holding, patching and sealing





PE Single-Sided Insulation Closing Tapes



Diamond PE Single-sided Closing Tape consists of a closed-cell polyethylene foam with a specially modified acrylic adhesive combined with an easy release white silicone paper liner. This product is primarily designed and used for the NBR foam insulation closing application.

Applications

- Closing tape for Aerofoam NBR Insulation
- Seals NBR and EPDM joints
- For tubes and sheet insulation
- Commonly used in HVAC

Available in : Acrylic Based



Bi-Directional Reinforced Foil Tapes



Diamond Bi-directional Aluminium Foil Tape is a combination of premium grade aluminum foil and scrim coated with a high performance synthetic rubber adhesive and protected by an easy release silicone release paper for specialized HVAC insulation applications.

Applications

- Closing tape for Aerofoam XLPE insulation
- Joints and seams
- Flexible duct sealing, joining
- Vapor barrier
- Indoor holding, patching and sealing

Available in : Rubber Based





ALLUMINIUM AND GLASS INDUSTRY



Surface Protection Tapes

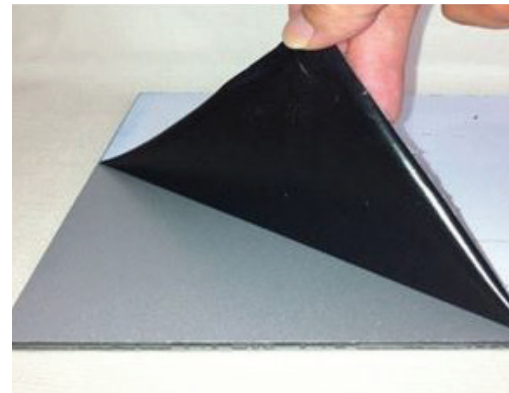


Surface Protection Tape consists of a low-density polyethylene (LDPE) film backing and an acrylic adhesive uniquely formulated to temporarily adhere on different types of surfaces without leaving adhesive residue. It is a temporary protective tape designed for different types of surface finish. Like- Smooth, glassy, anodised, powder coated and rough surfaces (Kynar & PVDF)

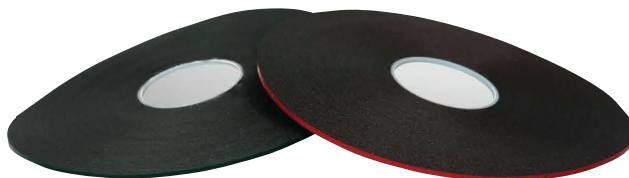
Applications

- Temporary surface protection – scratches and minor damages
- Panel protection – UV, dust, water
- Temporary branding – ACM panels
- Construction and interior protection
- Protection during transportation

Available in : Solvent Based, Rubber Based and Water Based



Double Glazing Spacer Tapes



Diamond Double-sided Double-Glazing Tape consists of a closed-cell polyethylene foam tape with a unique solvent-based acrylic adhesive system specially designed for window and door glazing applications. The tape is laminated with an easy release green/red colored liner for easier handling and usage.

Applications

- Windows and door glazing applications
- Structural Glazing Spacer
- Bonding of wide joints
- Double glazing of glass panels



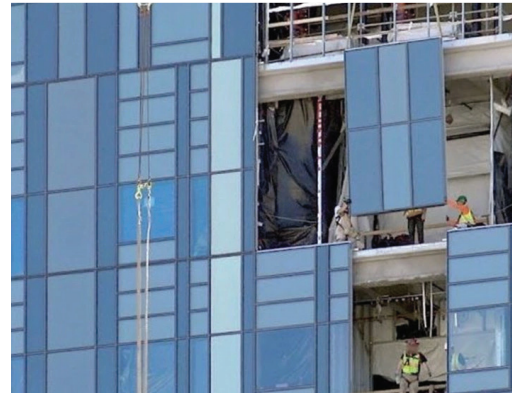
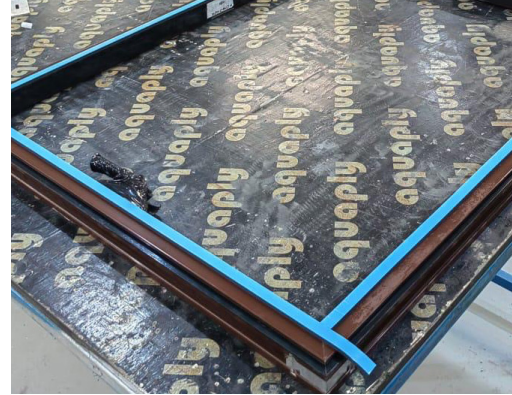
Structural Glazing Tapes



Diamond Double-sided Structural Glazing Tape is a high density, closed-cell PVC foam with a very high compression force deflection, and excellent foam recovery characteristic. Available in thickness 3.2, 4.8, 6.4, 8 and 9.5mm.

Applications

- Spacer for structural glazing system.
- Residential & commercial window glass glazing.
- Interior and exterior sealing.
- Vibration dampening.
- For environmentally controlled rooms.





SIGNAGE, INDUSTRIAL AND CONSTRUCTION TAPES





Double Sided PE Foam Tapes



Diamond Double-Sided PE Foam Tape is a closed-cell polyethylene tape with a unique differential adhesive system specially designed for signage and general purpose mounting applications. The tape is coated with a solvent-based acrylic adhesive laminated to a white release liner.

Applications

- General purpose mounting for home, office and workshop.
- Interior signage bonding applications.
- Point of Sale (POS) displays and signs.
- Mirror Mounting
- Bonding acoustic panels to walls.
- Attaching decorative trims.



Transfer Tapes



Diamond Adhesive Transfer Tape consists of a layer of acrylic adhesive sandwiched between a silicone release liner and a HDPE liner. This layer of adhesive provides very high adhesion and excellent initial tack. Transfer tapes are versatile, convenient, quick and easy to use. It provides excellent adhesion to a wide variety of surfaces under most conditions.

Applications

- Manufacturing of foam Tapes and other Tapes
- Bonding labels and decals
- Attaching nameplates and signs
- Electronics component assembly
- Graphic mounting and signage
- General-purpose adhesive applications



Application Tapes: Paper and Clear Film Based



Diamond Application Tape is a pressure-sensitive adhesive tape designed with advanced adhesion technology for excellent lamination, transfer and installation of vinyl graphics, films, decals, and other materials from their backing liner onto various surfaces with accurate alignment and positioning. Available in two types, the paper-based semi-transparent (translucent) version offers reliable handling, while the clear film-based transparent version provides superior see-through visibility for precise positioning.

Applications

- Indoor & outdoor vinyl applications
- Ideal for sign makers, crafters
- Works on glossy and matte surfaces
- High tensile strength – precise positioning
- Strong initial tack – vinyl films
- Clean removal – no residue



Red Polyester Tapes



Diamond Double-Sided Red Polyester Tape consists of a transparent polyester film coated on both sides with a strong solvent acrylic adhesive. The adhesive is laminated with a red easy-release plastic liner on one side. The aggressive solvent acrylic adhesive provides a strong adhesion to a wide range of surfaces including metal, paper and most plastics (polyethylene and polypropylene).

Applications

- Signage, films, foils
- POS and POP displays
- Banners, posters, nameplates
- Decorative profiles and moldings
- Plastic parts – automotive
- Battery packs, lenses and touchscreens



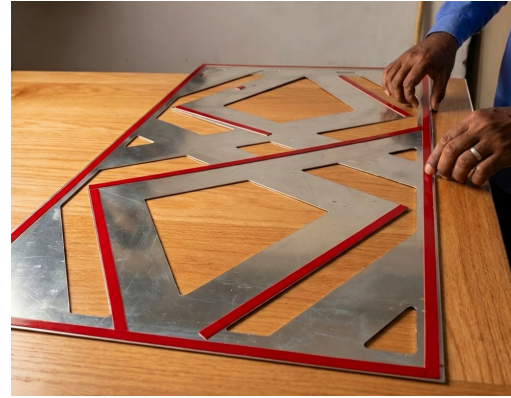
Scapa Double-sided Foam Tapes



Scapa Acrylic Foam Tapes (AFT) are high-performance double-sided tapes for bonding similar and dissimilar substrates, offering strong adhesion and resistance to thermal movement, aging and weathering. Scapa PE Foam Tape features closed-cell polyethylene foam with aggressive rubber-resin adhesive on both sides. Scapa PVC Foam Tape is a general-purpose, closed-cell, resilient tape with acrylic adhesive on both sides.

Applications

- Bonding metal, aluminum, glass and some plastics.
- Signage, interior, construction, automotive and electronic applications.
- ACM panels, solar panels and structural glazing applications.
- Frameless glass partitions.
- For panel fixation and bonding of metal stiffeners and reinforcement bars in doors, lifts, trailers, cabinets and traffic signs.



Scapa Single-sided Foam Tapes



Scapa Single-sided PVC Foam Tape is primarily a foam compression sealant. A high quality acrylic pressure sensitive adhesive is coated on one side, while having a paper release liner on the other non-adhesive face. This range provides solutions to practically every industry for applications such as water, air, dust and draught sealing, gap-filling, cushioning and protecting.

Applications

- Seals from water, air, dust and draught.
- Used for gap-filling, cushioning and anti-slip mounting.
- Used to prevent electrolytic corrosion.
- GRP Tanks
- Electrical Cabinets



tesa Tapes

Application Examples	Product Description and Application	Tape	Backing	Adhesion on steel [N/cm]	Total thickness [um]	Temperature resistance [C]
			Adhesive			
	tesa® 4610 <ul style="list-style-type: none"> Basic duct tape with good adhesive properties and attractive performance profile Very good adhesion level on various substrates High initial tack on many different materials Easy to tear by hand Easy unwinding 		PE laminated	4.5	150	30
			Synthetic rubber			
	tesa® 4970 <ul style="list-style-type: none"> High adhesion and good initial tack Reliable bond even to nonpolar surfaces Good adhesion on rough surfaces Good plasticizer resistance Suitable for long-term outdoor applications 		PVC film	13.6	225	Long-term: 60
			Tackified acrylic			Short-term: 70
	tesa® 5939 <ul style="list-style-type: none"> Temporary carpet laying during fairs, exhibitions, conventions & renovations Splicing Very good initial adhesion to a wide variety of substrates Good hand tearability 		PET cloth	8	190	Long-term: 60
			Synthetic rubber			Short-term: 60
	tesa® 51966 <ul style="list-style-type: none"> Excellent initial tack Fully suitable for long-term applications Developed for converters and adhesive tape specialists Excellent converting properties 		PET film	11.0	200	Long-term: 80
			Tackified acrylic			Short-term: 130
	tesa® ACXplus 704x gray/white <ul style="list-style-type: none"> Outstanding adhesion properties on a wide range of surfaces Temperature and weather resistance Performs well on "hard-to-bond" materials 		Foam acrylic	25 - 36	500	Long-term: 120
			Pure acrylic		1,000	Short-term: 200
	tesa® ACXplus 705x high transparency <ul style="list-style-type: none"> Highly transparent acrylic core tape Especially suitable for bonding of transparent and translucent materials such as glass or acrylic glass (PMMA) 		Solid acrylic	18- 31	500	Long-term: 100
			Tackified acrylic		1,000	Short-term: 200
					1,500	
					2,000	

*After 14 days

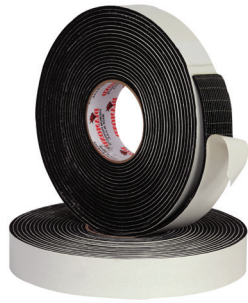
tesa® products prove their impressive quality day in, day out in demanding conditions and are regularly subjected to strict controls. All technical information and data above mentioned are provided to the best of our knowledge on the basis of our practical experience. They shall be considered as average values and are not appropriate for a specification. Therefore tesa SE can make no warranties, express or implied, including, but not limited to any implied warranty of merchantability or fitness for a particular purpose. The user is responsible for determining whether the tesa® product is fit for a particular purpose and suitable for the user's method of application. If you are in any doubt, our technical support staff will be glad to support you.



FOAM, GASKET AND SEALANT TAPES



Reinforced Neoprene Foam Tapes



Reinforced Neoprene Foam Gasket Tape is a mesh reinforced, closed-cell foam coated with a moderate acrylic adhesive system and laminated with a silicone release paper for ease of application and handling. The tape has excellent flexibility which is suitable for switch gear, panel boards and gasket applications.

Applications

- Switchgear and panel use
- Seals enclosures and cabinets
- Seals lighting, doors, hatches
- Vibration dampening and cushioning
- Water & dust sealing
- Gap-filling and transport sealing



EVA Foam Tapes



Diamond Single Sided EVA Foam Tape is made with an EVA backing material coated on one side with a strong hot melt adhesive and carried on a white release paper. The tape has low moisture content, making it an effective sealant, and delivers best results when applied to clean, dry surfaces. It provides excellent shock absorption and ensures superior adhesion even on rough surfaces.

Applications

- Cushioning and shock absorption
- Sealing gaps and joints
- Vibration dampening in machinery
- Protective layer for surfaces
- Mounting and general holding
- Gasket and Duct Insulation gasketing Purpose





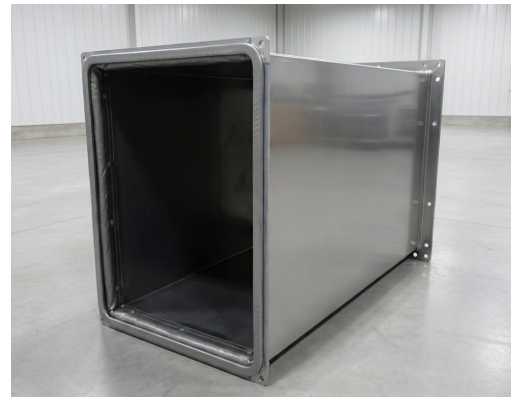
Butyl Tapes



Diamond Butyl tape is designed to seal and prevent the entry of dust, air, and moisture, and assure a weather-tight seal in many industries.

Applications

- Roofing: Protects and seals cracks, seams and even small holes on different types of roofs such as metal, vinyl, asphalt, cement, and tar paper.
- Windows and Insulated glass
- Vents: preventing airflow and moisture from entering the building .
- HVAC Sealing
- Automotive industry: Car door/windscreen sealing /wire harness and cables.
- Suitable for sealing in transport applications.



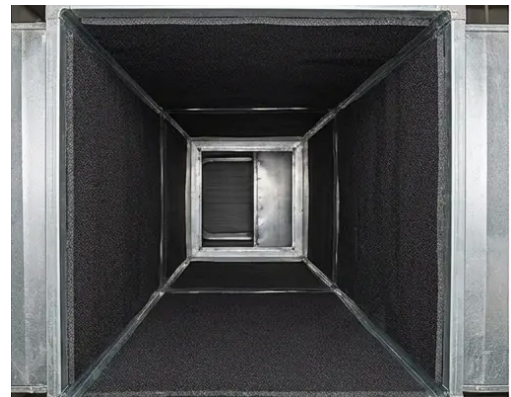
Sound Absorption PU Foam Tapes



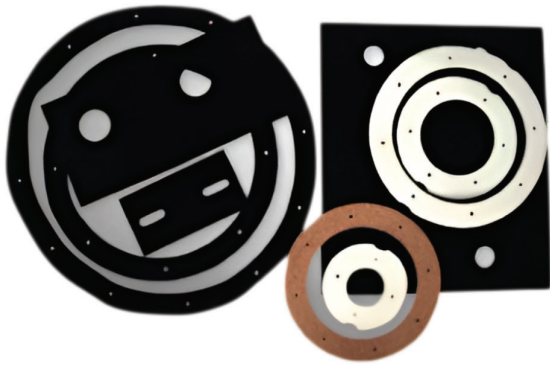
Diamond Sound Absorption PU Foam Tape consists of a polyurethane foam backing combined with a high-strength solvent-based adhesive and laminated with an easy release paper liner. The lightweight PU foam is a high performance barrier that meets self-extinguishing fire rating as per UL-94.

Applications

- Sound proofing e.g. engine rooms, theatres, auditorium and indoor stadium
- Canopy for generator set and air compressor.
- HVAC systems.
- Applicable for Automotive and Electronic Industries.
- For Naval Shipyards and Industrial Bodyworks.



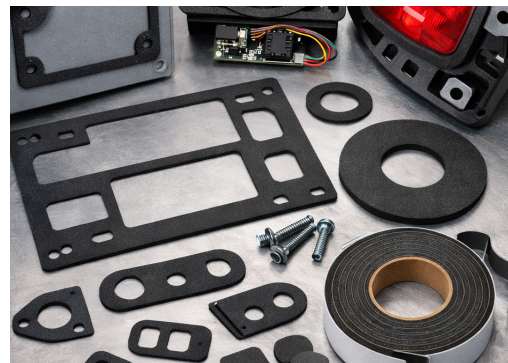
Die-Cut Foam and Tapes



Diamond Die-Cut Foam is a closed-cell polyethylene foam which is die-cutted into customized shapes and sizes. It is being used primarily for gasket purposes which effectively seals against air, dust and moisture.

Applications

- Customized die-cuts for effective sealing.
- Closed-cell foam structure.
- Excellent thermal stability.
- Foam can be coated with adhesive as per requirement.
- Can be applied to rough and uneven surface.



EPDM Foam Tapes



Aerofoam EPDM Foam Tape offers excellent weather resistance, flexibility, and durability for sealing, insulating, and protecting in harsh indoor and outdoor environments. It withstands UV rays, ozone, moisture, and temperatures from -40°C to $+120^{\circ}\text{C}$ while maintaining strong adhesion. The closed-cell structure blocks air, dust, and water, and the self-adhesive backing allows easy installation. It also cushions vibrations and noise, ensuring reliable, long-lasting performance. Ideal for applications requiring a resilient and weatherproof seal.

Applications

- HVAC ducts and insulation.
- Windows and doors sealing.
- Automotive gasketing and vibration control.
- Construction joints and glazing.
- Electrical enclosures and panels.
- Refrigeration and appliances.





CONSUMER AND GENERAL PURPOSE TAPES



Duct Tapes



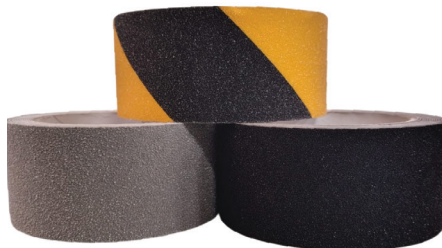
Diamond Duct Tape is a cloth tape with fiber mesh reinforcement that is coated with a very high performance rubber-based pressure sensitive adhesive. This product is mainly used for duct insulation applications and heavy duty packing. These are available in black and gray.

Applications

- HVAC and Construction Applications.
- Maintenance, Repair and Operation Applications.
- For packaging, splicing, securing, bundling, patching, reinforcing and labeling applications.



Anti-Slip Tapes



Diamond Anti-Slip Tape is a smart & effective tape product which offers extra safety for floors that tend to be slippery. This tape consists of a black colored vinyl (PVC) backing with a rough grainy surface on top, coated with a strong solvent acrylic adhesive on the other side. This tape is backed by a white-colored easy release paper liner.

Applications

- Effective slip and fall prevention material applied to stairs, ramps and slippery floors.
- Locker rooms, around hot tubs and pools, water skis and exercise equipment.
- Commonly used as a safety measure for stairs and escalators.



Cross Weave Filament Tapes



Diamond Cross-Weave Filament Tape is made of a polyester film backing reinforced with a fiberglass mesh and coated with a strong, aggressive rubber resin-based adhesive. It offers excellent tensile strength for heavy-duty applications, provides strong initial tack and adhesion, and delivers superior holding power, ensuring secure performance with minimal tape usage.

Applications

- Heavy Duty Bundling
- Carton packing
- Material bundling
- Pallet unitizing
- Packaging and strapping
- Metal coil tabbing



Tissue Tapes



Diamond Tissue Tape consists of a strong solvent acrylic adhesive coated on both sides of a thin tissue carrier. A havana-yellow release liner is laminated to one side of the tape. The aggressive adhesive provides high initial tack to a wide range of surfaces including wood, metal, paper and most plastics including polyethylene and polypropylene for immediate bonding.

Applications

- Packing of Confectionery Items.
- Lamination of foam, fabrics and papers.
- Web splicing for paper and corrugated board.
- Attaching lightweight signs, nameplates and plaques.
- Production of promotional signage or sample boards.



Kraft Paper Tapes



Kraft Paper Tape is composed of saturated crepe paper coated with a strong natural rubber or rubber resin adhesive, designed for environmentally friendly carton sealing and packaging applications. It provides excellent tack and strong adhesion to various carton surfaces, ensuring secure and durable seals even under extreme atmospheric conditions. The tape is hand-tearable for easy application and offers reliable holding power during storage and transit. Its printable surface also makes it suitable for branding, labeling, and custom packaging requirements.

Applications

- Paper carton sealing/packaging solution.



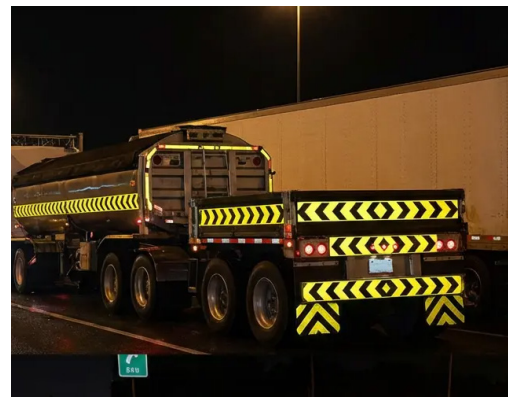
Reflective Tapes



Diamond Reflective Tape boosts visibility and safety in low-light and nighttime conditions. It is durable, weather-resistant, and easy to apply, making it suitable for vehicles, equipment, and various surfaces. Ideal for both indoor and outdoor applications, it offers high visibility in low light, works on flat or curved surfaces, and features a simple peel-and-stick application for use on safety gear and equipment.

Applications

- Vehicles: Trucks, trailers, emergency vehicles, bicycles, and motorcycles for enhanced road safety.
- Worksites and Facilities: Machinery, tools, safety barriers, stairways, and loading docks.
- Personal Safety Gear: Helmets, clothing, backpacks, and protective equipment.
- Public Areas: Signage, bollards, posts and other objects requiring increased visibility.










DIAMOND TAPES™


P.O. Box 50673, Dubai Investments Park 2,
Dubai, United Arab Emirates


enquiry@diamondtapes.com


+971 72589006


www.diamondtapes.com